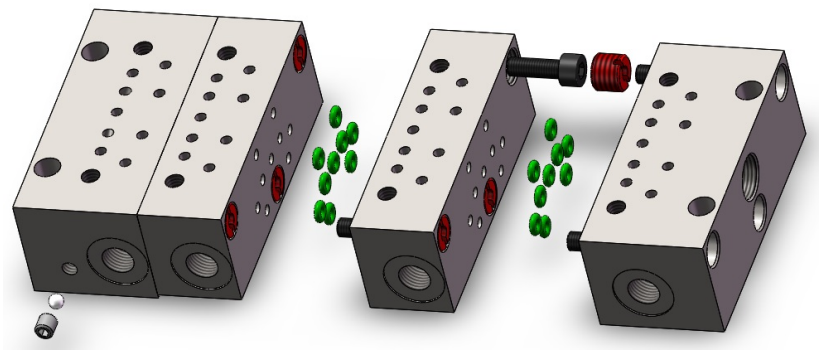


# DMF-DMFA系列分配器

(DMF用于油和油脂，DMFA用于油气)

Modular progressive divider valves  
模块式递进分配器



# TABLE OF CONTENTS

<b>DMF</b>		Visual pin目视指示器	14
Description 描述	3	Inductive control 超级传感器	14
Technical data 技术参数	4	Cycle control循环控制	14
Assembly and components 装配和部件	5		
<b>Bases 底座</b>		Visual pin and By-pass	
Metering bases 计量底座	5	Bridge element 桥元件	16
Ordering codes (Ni)订货号 (镀镍)	6	By-pass element 旁通元件	16
Single bases 单个底座	6	Pressure pin indicator (with memory)	17
Assembly 组装底座	6	堵塞指示器 (带复位)	17
Ordering codes (SS316L)订货号(316L不锈钢)	7	Bridge element and sensors桥元件和传感器	17
Single bases 单个底座	7	Check Valve	18
Assembly 组装底座	7	Metering block assembly order	19
Junctions	8		19
Inset filter	8	Assembly ordering codes分配器订购信息	
Inset filter 70 μ	8		
Valve Shut-Off EV-2	8		
	9		
Shut-Off Valves	9		
<b>Metering valves 计量阀</b>			
Metering valves components	10		
Assembly	10		
Replacement	10		
Components 部件	10		
Outlet and dimensions 输出和尺寸	11		
Outlets 输出	11		
Metering Valve 计量阀	12		
With visual pin indicator 带目视指示器	12		
With inductive sensor 带超级传感器	12		
Ordering codes Ni and Ordering codes SS316L 镀镍和316L不锈钢订货号	12		
Metering Valve 计量阀	13		
With visual pin indicator 带目视指示器	13		
With inductive sensor 带超级传感器	13		

## Features and general description 特点和一般介绍

DMF is a progressive modular distributor. It measures out and divides lubricant thanks to piston movement. DMF是一种递进式模块化分配器。由于活塞的运动，它能保证润滑油的排出和分配。

This system is highly qualified to measure out oil and grease for one or more support groups. 该系统是高度精密的计量油和油脂为一个或多个支持团体。

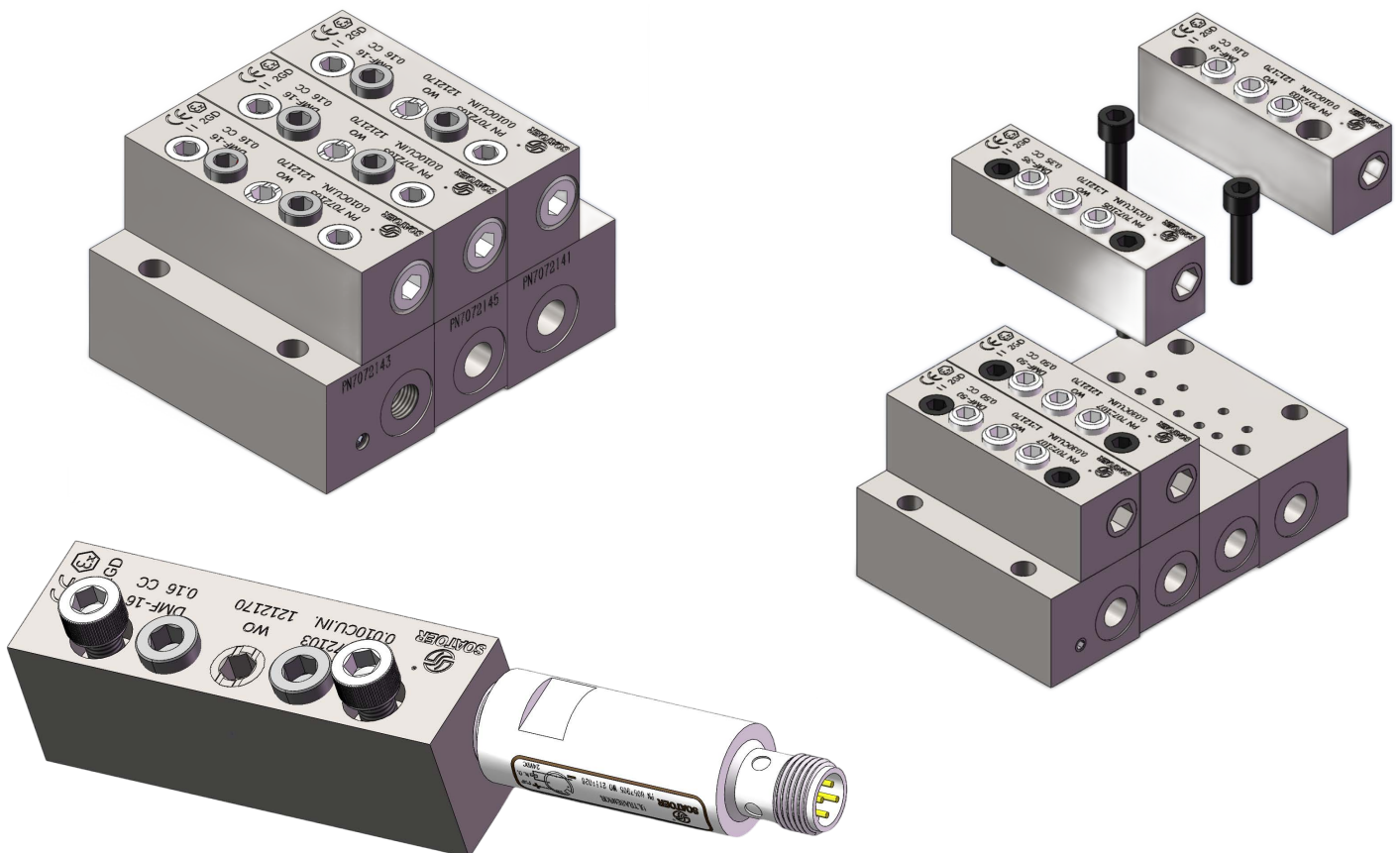
Every piston is in line with the previous one and the next one. When a piston fails to work, as for an external obstruction, the whole system stops (this happens even when we place a plug on a unused outlet). 每个活塞都与前一个和下一个在同一直线上。当活塞不能工作时，由于外部堵塞，整个系统停止工作(即使我们在一个未使用的出口上安装一个堵头，也会发生这种情况)。

A single control element is enough to check the functioning of the whole distribution system. 一个检测元件就足以检查整个分配器的运行。

The DMF modular system consists of two main parts: Base (divided into initial base, intermediate base and final base) and the Metering Elements (available in different outputs). DMF模块化系统主要由两部分组成：底座(分为入口底座、中间底座和末端底座)和计量元件(可提供不同的输出)。

The system can be easily extended and its modularity allows a low cost component replacement. 该系统可以很容易地扩展，其模块化允许低成本部件的更换。

The assembled base can be installed and connected without Modular Metering elements to make easier the Tube tracking process. Metering elements can be installed later. 组装底座可以安装和连接，无需模块化计量元件，使管道跟踪过程更容易。计量元件可稍后安装。



Working pressure 工作压力	Min 15 Bar Max 400 Bar 最小15bar,最大400bar
Lubricants 润滑剂	Mineral oil with minimum viscosity of 15 cSt at fluid working temperature.
[at minimum working temperature]	最低15cSt Grease consistency NLGI-2 Max
Working temperature 工作温度	From -40 °C to + 120 °C
Output displacement 输出排量	Available piston size 0.04/0.08/0.16/0.25/0.35/0.40/0.50/0.60/0.65
Inlet 入口螺纹	1/4" BSP
Outlet 出口螺纹	1/8" BSP
Number of elements 组数	From 3 to 20
Cycles 循环	Max 500
Gasket 密封	"O"-ring Viton 90 sh
Parts protective coating 镀层	Nickel 800 hour salt spray tested
Marking 标记	ATEX II GD - CE
Material 材料	Steel, Ni plated or SS316L 镀镍和不锈钢
Metering element 计量阀	Supplied with screw 含螺丝
Element: initial base 入口底座	Supplied with screw and "O"-Ring 含螺丝和O型圈
Element: intermediate base 中间底座	Supplied with screw, adapter screw and "O"-Ring, 含螺丝和O型圈
Element: final base 末端底座	Supplied with screw, 含螺丝
Bridge element 桥元件	in or-der to convey the ouput of one or more output into the next one. Supplied with screw . 为了将一个或多个输出的输出传递到下一个输出。附带螺丝。
By-pass element 旁通阀	They are used as a reserve for additional points or for metering valves replacement in case of output reduction. 它们被用作备用额外的点或计量阀更换的情况下，输出减少
Monitoring element 监控元件	Visual or inductive 目视或者超级传感器
Air purge 放气阀	2 valves included in the final base 安装在末端底座
Torque tightening (base) 扭力	15Nm
Torque tightening (elements) 扭力	15Nm

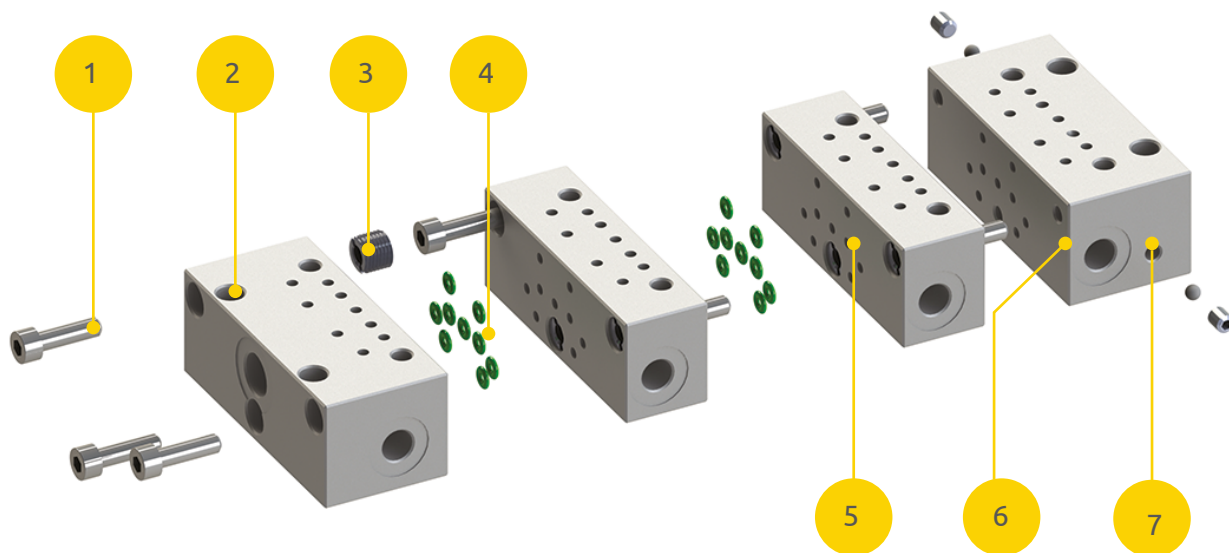
## Assembly and components 集成和组件

The metering base is made of a serie of at least three elements: one initial base, an intermediate one and a final one. 计量底座由至少三个元素组成:一个初始底座, 一个中间底座和一个最终底座。

Thanks to a flexible and easy assembling process, the intermediate bases can be increased later to a maximum of 18. We can always add modules using the fixing bushes supplied with the assembly.

由于组装工艺灵活方便, 后中间基可增加到最多18个。我们总是可以使用组件提供的固定套筒添加模块。

The system can operate ad high pressures without lubricant loss between elements.该系统可以在高压下运行, 元件之间没有润滑剂损失。

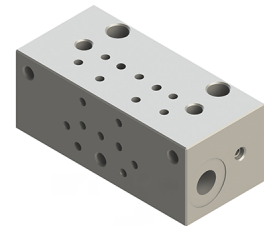
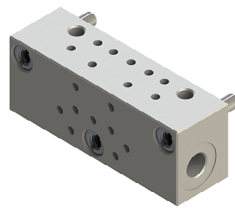
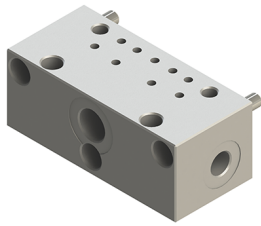


- 1 Base assembling screw 装配螺丝
- 2 Initial base 入口底座
- 3 Fixing bushes 连接螺套
- 4 "O"-ring O型圈

- 5 Intermediate base 中间底座
- 6 Final base 末端底座
- 7 Purge air valve 排气阀

Single bases 单个底座

DMF

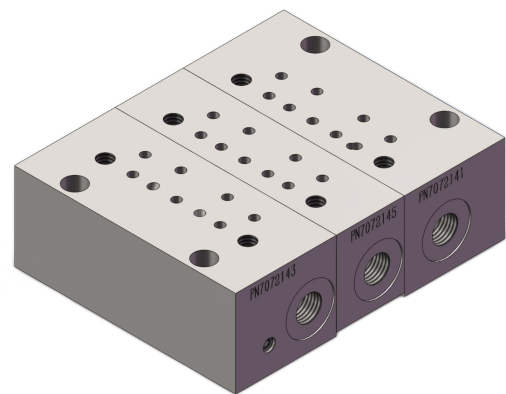


<b>Code</b>	7072141	<b>Code</b>	7072142	<b>Code</b>	7072143
<b>Descrizione</b> 描述	Initial base入口底座	<b>Descrizione</b> 描述	Intermediate base 中间底座	<b>Descrizione</b> 描述	Final base末端底座

Assembly

DMF.03...20

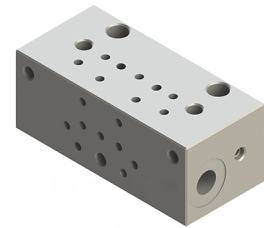
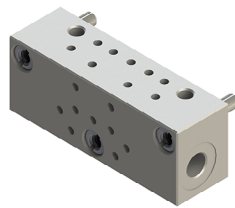
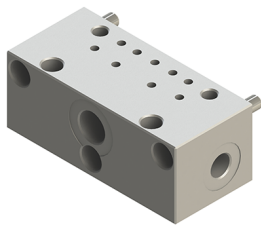
Code	Assembled bases
7072201	3
7072202	4
7072203	5
7072204	6
7072205	7
7072206	8
7072207	9
7072208	10
7072209	11
7072210	12
7072211	13
7072212	14
7072213	15
7072214	16
7072215	17
7072216	18
7072217	19
7072218	20



DMF03

## Single bases-SS316L; 不锈钢单个底座

## DMFX

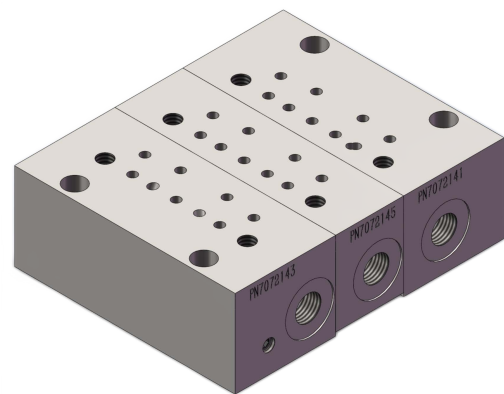


Code	7072161	Code	7072162	Code	7072163
Descrizione描述	Initial base	Descrizione描述	Intermediate base 中间底座	Descrizione描述	Final base末端底座

## Assembly 组装

## DMFX3....20

Code订货号	Assembled bases 底座组数
7072301	3
7072302	4
7072303	5
7072304	6
7072305	7
7072306	8
7072307	9
7072308	10
7072309	11
7072310	12
7072311	13
7072312	14
7072313	15
7072314	16
7072315	17
7072316	18
7072317	19
7072318	20



DMFX3

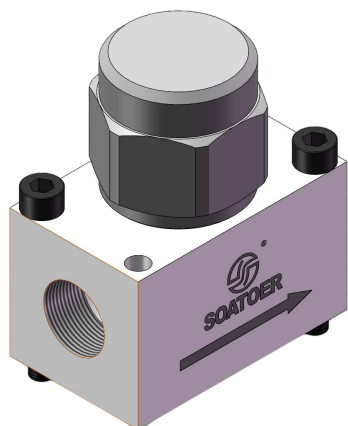
Inset filter 过滤器

7076012

These strainer prevent the lubricant lines from being obstructed by impurities.

这些过滤器防止润滑油线被杂质阻塞。

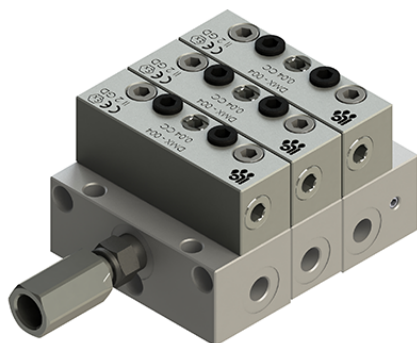
FILTER WITH STEEL BODY FOR HIGHTPRESSURE(MAXIMUM 500BAR-7200PSI (钢铁材质的高压过滤器最高达500bar)



Filter Code过滤器订货号	Filtering(micron)过滤精度	Thread螺纹G	Cartridge滤芯
1113280	10μm	G1/4	8176008
7076035	25μm	G1/4	8176009
7076023	25μm	G3/8	8176009
7076007	25μm	G1/2	8176009
7076039	150μm	G1/4	8176013
7076027	150μm	G3/8	8176013
7076011	150μm	G1/2	8176013
7076040	300μm	G1/4	8176004
7076028	300μm	G1/4	8176014
7076012	300μm	G1/2	8176014

Inset filter 70 μ

07.270.5



These strainer prevent the lurbricant lines from being obstructed by impurities.

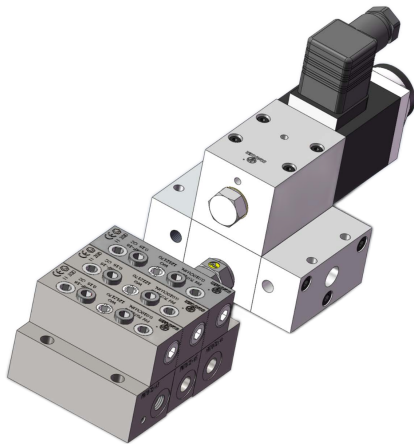
Filtration rate **70 μ**  
Plug **1/4" BSP (F)**

ORDERING CODE 07.270.5



## Valve Shut-Off EV-2 截止阀

Code 5004002



SHUT OFF valves EV-2 are made of a special “NC” 2-ways solenoid valve and of a modular base that can be directly assembled on the DMF inlet.

关闭阀EV-2是由一个特殊的“NC”2路电磁阀和一个模块化的底座，可以直接组装在DMF入口。

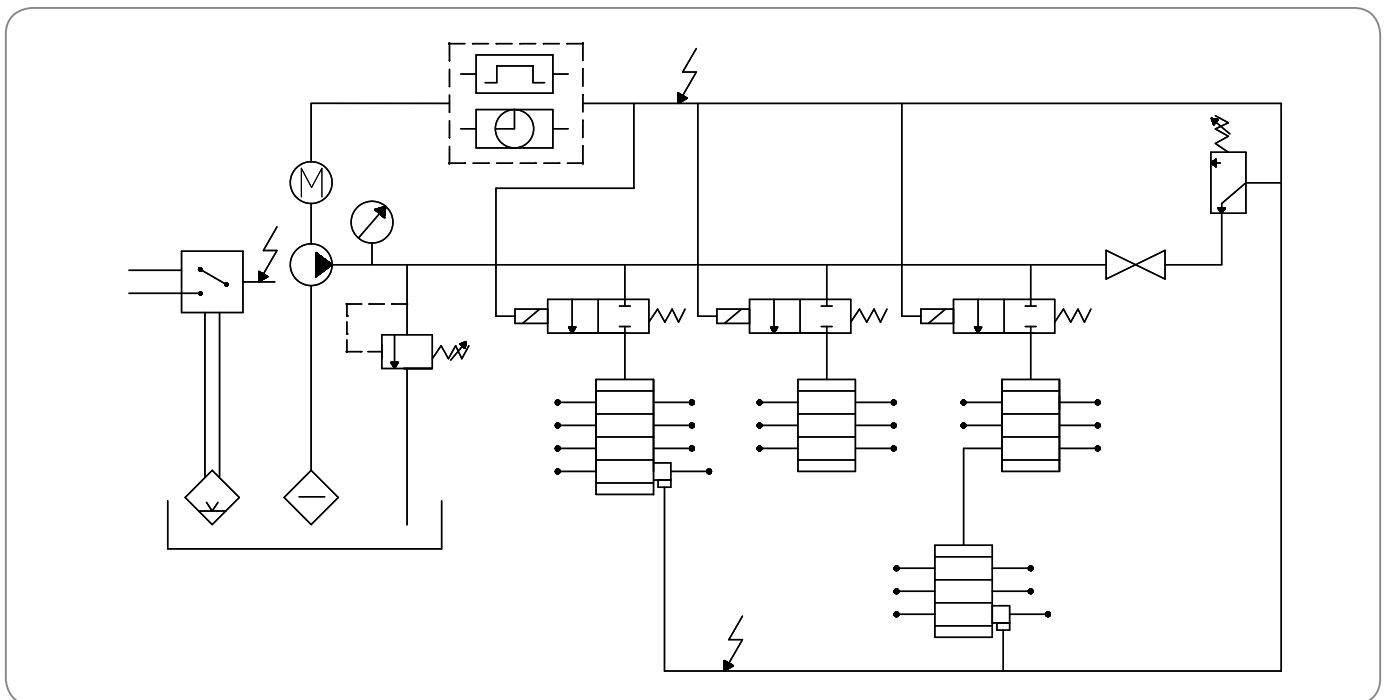
**EV-2 valve is the essential element in order to transform a standard progressive system into a *sectio-ned system*.**  
EV-2型阀是将标准渐进系统转变为分段系统的关键元件。

### Ordering codes

Code	Voltage
5004002	24 V DC
5004003	115 V AC
5004004	230 V AC

### Technical data 技术参数

Pressure 压力	Max 300 Bar
Lubricant 润滑剂	Oils Viscosity min 32 cSt Grease max NLGI-1
Temperature 温度	From -20 °C to +80 °C
Voltage 电压	24 V DC, 115 - 230 V AC 50/60 Hz.
Power 功率	36 W (DC) 8 VA (AC)
Protection 防护等级	IP54
Inlet 入口螺纹	1/4" BSP



### Metering valves components 计量阀组件

The minimum number of metering valves in an as-assembled block is 3 and the maximum is 20.

在一个组装块中，最小的计量阀数量是3个，最大的是20个。

The installation on the base is made using the two fixing screws TEC-UNI-5931 UNF 1/4 "x 1" 1/4 supplied with the metering valve.

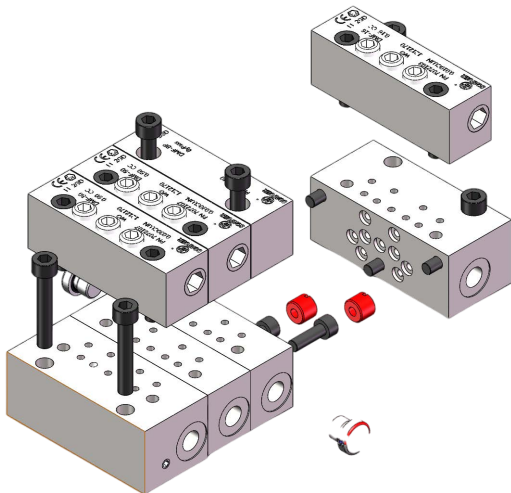
底座上的安装使用UNF 1/4 " 螺栓，由计量阀提供。

The number of required metering elements, as long as their output and the presence of a monitoring control sensor, are mandatory in order to choose the right model. 所需计量元件的数量，只要它们的输出和监测控制传感器的存在，是强制性的，以便选择正确的模型。

It 's always possible to replace a valve with a different model without disconnecting the tubelines or open the base.

在不断开管道或打开基座的情况下，总是可以用不同型号的阀门来替换阀门。

### Assembly 组成



Assembling dosing elements is extremely simple. 组装分配元件非常简单。

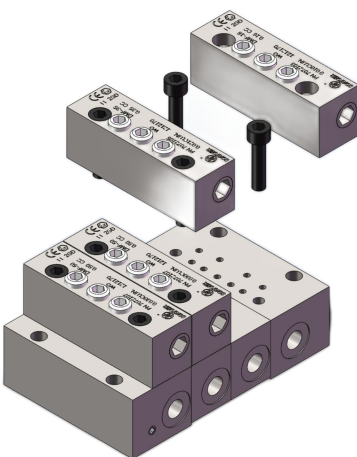
Place it on its own base. Insert fixing screws and tighten them using a maximum 12 nm force.

把它放在自己的底座上。插入固定螺钉和tighten他们使用最大12纳米力。

During the operation pay attention to "O"-ring on the support base side.

操作时注意支架底座侧的“O”形环。

### Replacement 替换



The same operation is required to replace a valve of insertion of a by-pass element.

在更换阀门或插入旁路元件时，也需要进行同样的操作。

Remove the fixing screws and the element itself. In-stall the new element as in the image aside.

拆卸固定螺丝和元件本身。像图片中一样安装新元素。

Outlets 输出

Metering elements are supplied with a set-up for one or two separate outputs.  
 计量元件提供了一个设置为一个或两个单独的输出。

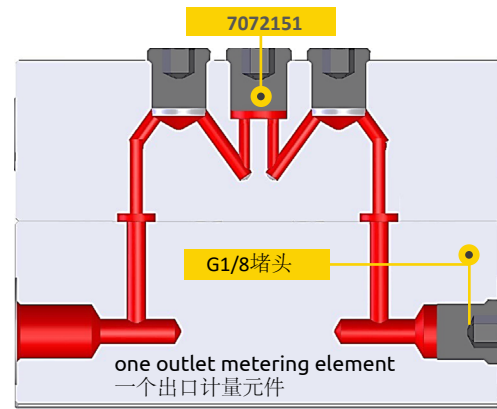
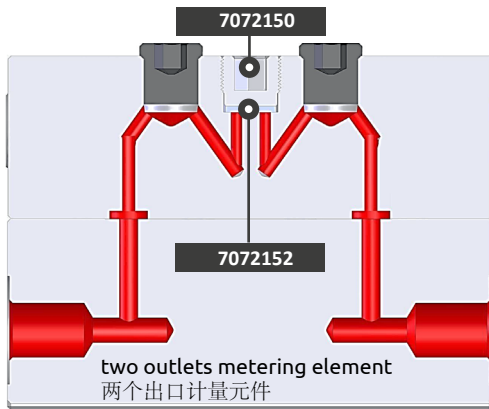
It is always possible to modify this condition (from one to two and viceversa) turning the adapter screw between the vertical outputs as explained in the image below.  
 总是可以修改这个条件(从1到2, 反之亦然), 在垂直输出之间转动适配器螺钉, 如下图所示。

It is possible to sum the two output of the same element.  
 可以将同一元素的两个输出相加。

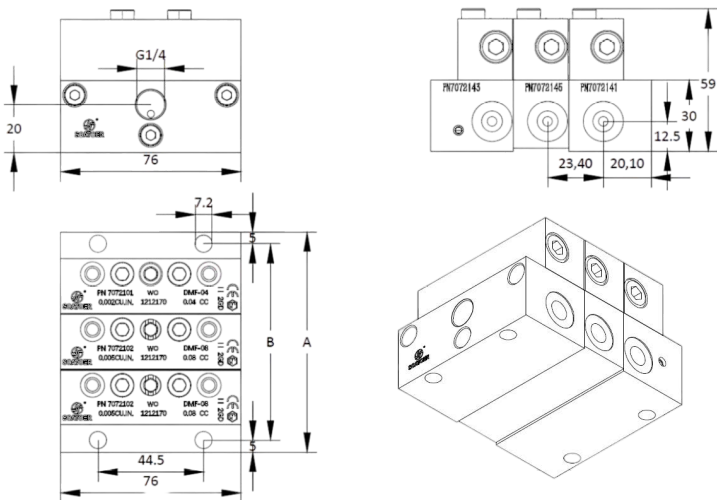
Remove the grub screw (code A51.087096 1/8" K) and the ring (Code A53.114116) replacing it with the grub screw (code A92.087058 1/8" K) as shown in the image below. 拆卸内六角无头螺丝(型号:7072150)和垫片(型号:7072152), 将其替换为内六角无头螺丝(型号:7072151), 如下图所示。

When the two outlet are connected remember to shut the unused one using the grub screw (G1/8" Plug).  
 连接两个出线口时, 记得用堵头(G1/8" Plug)关闭不用的那个出油口。

**BE CAREFUL! 当心**  
**Always shut a no-longer-required outlet as shown in the image below. Else you would occur in system block and a valve alarm.**  
 总是关闭不再需要的出口, 如下图所示。否则会出现系统阻塞和阀门报警。

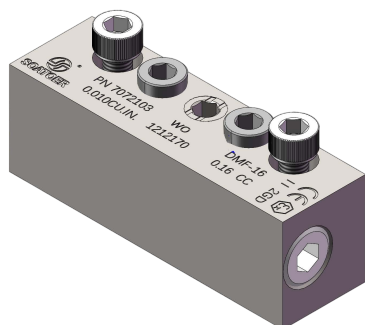


Assembly block dimensions 组装阀块尺寸



Base N°	B [mm]	A [mm]	Base N°	B [mm]	A [mm]
3	83.20	93.00	12	293.90	303.70
4	106.60	116.40	13	317.30	327.10
5	130.00	139.80	14	340.70	350.50
6	153.40	163.20	15	364.20	374.00
7	176.80	186.60	16	387.60	397.40
8	200.20	210.00	17	411.00	420.80
9	223.60	233.40	18	434.40	444.20
10	247.00	256.80	19	457.80	467.60
11	270.40	280.20	20	481.20	491.00

## Metering Valve (NI) 计量阀

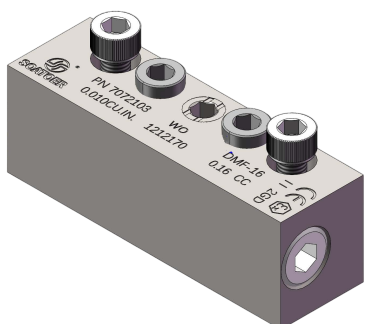


double outlet

double outlet

Code	Output	Code	Output
7072101	0.04cc/cycle	7072107	0.50cc/cycle
7072102	0.08cc/cycle	7072108	0.60cc/cycle
7072103	0.16cc/cycle	7072109	0.65cc/cycle
7072104	0.25cc/cycle	7072140	0.00cc/cycle
7072105	0.35cc/cycle		
7072106	0.40cc/cycle		

## Metering Valve (316L) 计量阀

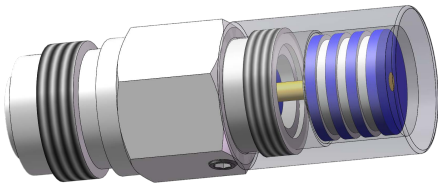


double outlet

double outlet

Code	Output	Code	Output
7072111	0.04cc/cycle	7072117	0.50cc/cycle
7072112	0.08cc/cycle	7072118	0.60cc/cycle
7072113	0.16cc/cycle	7072119	0.65cc/cycle
7072114	0.25cc/cycle	7072190	0.00cc/cycle
7072115	0.35cc/cycle		
7072116	0.40cc/cycle		

## Visual pin 目视指示器



The visual pin shows the piston movement, monitoring the proper operation of the entire system.

直观销显示活塞的运动，监控整个系统的正常运行。

### Visual pin kit codes

6058808

G1/4

## Supersensor control 超级传感器



Ultrasensor was designed to replace systems with inductive proximity sensors, mechanical micro-switches, and the magnetic contacts that monitor the movement of the Pistons inside the divider elements of progressive systems.

The sensor is a screw-on accessory (laterally to the divider), without needing to make any modifications to the divider.

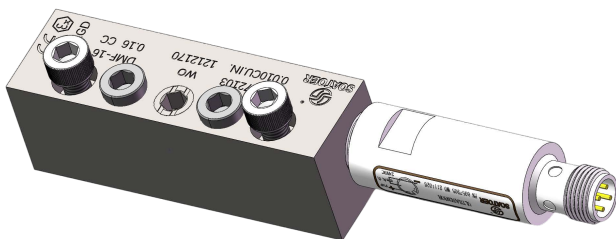
This patented technology allows you to check the variations in magnetic flow when the piston reaches the detection zone thanks to a Hall-Effect sensor. There are no moving parts providing for a complete absence of wear.

Ultrasensor的设计是为了用感应式接近传感器、机械微开关和磁性触点来取代现有的系统，这些触点可以监测渐进式系统中分压器内部活塞的运动。

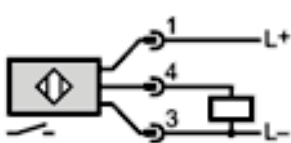
传感器是一个拧上附件(横向到分压器)，无需对分压器做任何修改。

这项专利技术通过霍尔效应传感器，当活塞到达探测区域时，可以检测磁流量的变化。

没有运动部件，完全没有磨损。



## Electrical connection



## Sensor kit codes

6057905 24VDC PNP NO

6057906 24VDC NPN NO

## Electrical Data 电气参数

Voltage	6-30 V DC
Outlet current	Max 200 mA
Current	< 22 mA
Operating temperature	from - 25 °C to +70 °C
Protection	IP 68
Sensor housing	316L Stainless steel
Connection	M12x1

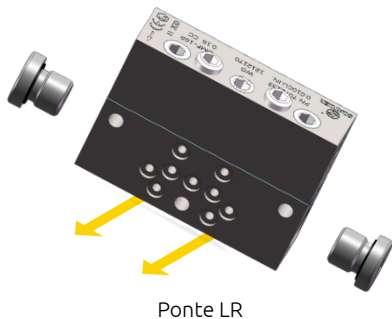
Bridge element 桥元件

DMF-LR-L-R

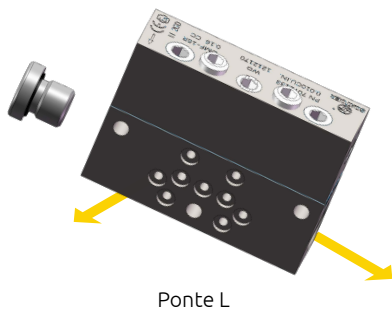
The bridge element transfers the output of one or both the outlets to the next element. It can be ordered with a left, right or two bridging outlets.  
桥元件将一个或两个出口的输出转移到下一个元件。它可以订购一个左，右或两个桥接出口。

Arrows point which outlets are connected to the next element. They are mounted and replaced as a standard metering valve.  
箭头指向连接到下一个元素的出口。它们作为标准计量阀安装和更换。

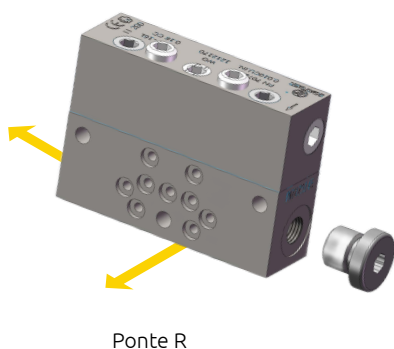
It is important to shut the base outlet corresponding to the arrows on top of the element.重要的是关闭对应于元素顶部箭头的底座出口。



Ponte LR



Ponte L



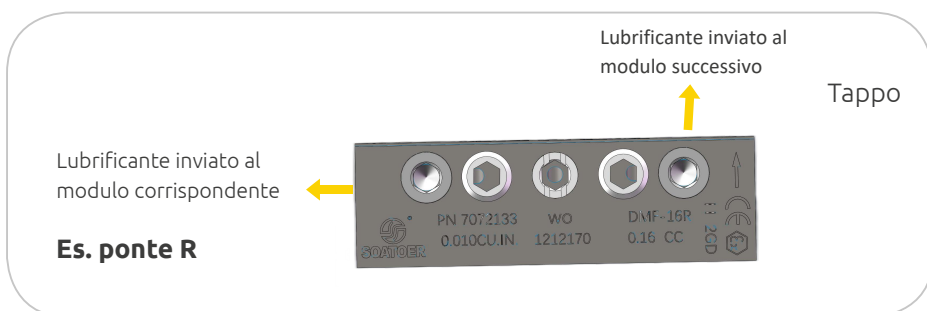
Ponte R

Ordering codes Ni(碳钢镀镍)

0.04cc/cycle	<u>DMF04L</u> or <u>7072401</u>	<u>DMF04LR</u> or <u>7072411</u>	<u>DMF04R</u> or <u>7072421</u>
0.08cc/cycle	<u>DMF08L</u> or <u>7072402</u>	<u>DMF08LR</u> or <u>7072412</u>	<u>DMF08R</u> or <u>7072422</u>
0.16cc/cycle	<u>DMF16L</u> or <u>7072403</u>	<u>DMF16LR</u> or <u>7072413</u>	<u>DMF16R</u> or <u>7072423</u>
0.25cc/cycle	<u>DMF25L</u> or <u>7072404</u>	<u>DMF25LR</u> or <u>7072414</u>	<u>DMF25R</u> or <u>7072424</u>
0.35cc/cycle	<u>DMF35L</u> or <u>7072405</u>	<u>DMF35LR</u> or <u>7072415</u>	<u>DMF35R</u> or <u>7072425</u>
0.40cc/cycle	<u>DMF40L</u> or <u>7072406</u>	<u>DMF40LR</u> or <u>7072416</u>	<u>DMF40R</u> or <u>7072426</u>
0.50cc/cycle	<u>DMF50L</u> or <u>7072407</u>	<u>DMF50LR</u> or <u>7072417</u>	<u>DMF50R</u> or <u>7072427</u>
0.60cc/cycle	<u>DMF60L</u> or <u>7072408</u>	<u>DMF60LR</u> or <u>7072418</u>	<u>DMF60R</u> or <u>7072428</u>
0.65cc/cycle	<u>DMF65L</u> or <u>7072409</u>	<u>DMF65LR</u> or <u>7072419</u>	<u>DMF65R</u> or <u>7072429</u>

Ordering codes 316L (316L不锈钢)

0.04cc/cycle	<u>DMF04L</u> or <u>7072431</u>	<u>DMF04LR</u> or <u>7072441</u>	<u>DMF04R</u> or <u>7072451</u>
0.08cc/cycle	<u>DMF08L</u> or <u>7072432</u>	<u>DMF08LR</u> or <u>7072442</u>	<u>DMF08R</u> or <u>7072452</u>
0.16cc/cycle	<u>DMF16L</u> or <u>7072433</u>	<u>DMF16LR</u> or <u>7072443</u>	<u>DMF16R</u> or <u>7072453</u>
0.25cc/cycle	<u>DMF25L</u> or <u>7072434</u>	<u>DMF25LR</u> or <u>7072444</u>	<u>DMF25R</u> or <u>7072454</u>
0.35cc/cycle	<u>DMF35L</u> or <u>7072435</u>	<u>DMF35LR</u> or <u>7072445</u>	<u>DMF35R</u> or <u>7072455</u>
0.40cc/cycle	<u>DMF40L</u> or <u>7072436</u>	<u>DMF40LR</u> or <u>7072446</u>	<u>DMF40R</u> or <u>7072456</u>
0.50cc/cycle	<u>DMF50L</u> or <u>7072437</u>	<u>DMF50LR</u> or <u>7072447</u>	<u>DMF50R</u> or <u>7072457</u>
0.60cc/cycle	<u>DMF60L</u> or <u>7072438</u>	<u>DMF60LR</u> or <u>7072448</u>	<u>DMF60R</u> or <u>7072458</u>
0.65cc/cycle	<u>DMF65L</u> or <u>7072439</u>	<u>DMF65LR</u> or <u>7072449</u>	<u>DMF65R</u> or <u>7072459</u>



Es. ponte R

### By-pass element 旁通元件

### DMF.BP



The by-pass element is dimensionally identical to the metering model, but does not contain the pi-ston. It has the function of creating a reserve position when the number of outlets change.

旁路元件在尺寸上与计量模型相同，但不包含活塞。它具有在网点数量变化时创建预留位置的功能。

When installed, the outlet holes in the respective-base must be closed. It can be mounted in advance as a placeholder for additional element or to decrease the outlets number.

安装时，各底座的出水口必须关闭。

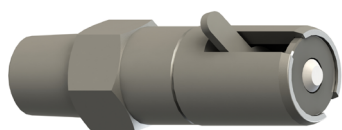
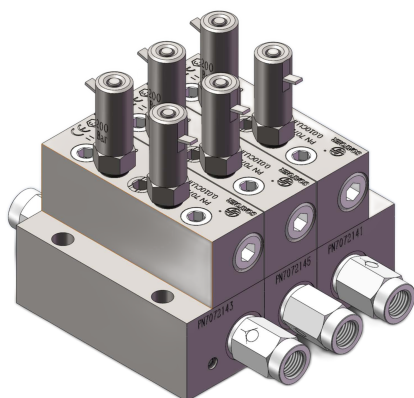
它可以提前安装，作为额外元件的占位符或减少插座数量。

At least 3 metering elements are required in order to install a by-pass element. 为了安装旁通元件，至少需要3个测量元件。

#### Ordering codes

Code	Model
7072140	Ni 碳钢镀镍
7072190	316L 不锈钢

### Pressure pin indicator (with memory) 压力销指示器(带复位)



These indicator are usually for overpressure control on primary and secondary lines.

这些指示器通常用于一级和二级管线的超压控制。

In the eventuality of a pressure higher then expected, the pin indicator moves out. It remains in position until the release lever is manually actua-ded.

在压力高于预期的情况下，引脚指示器移出。在手操作释放杆之前，它保持在原来的位置。

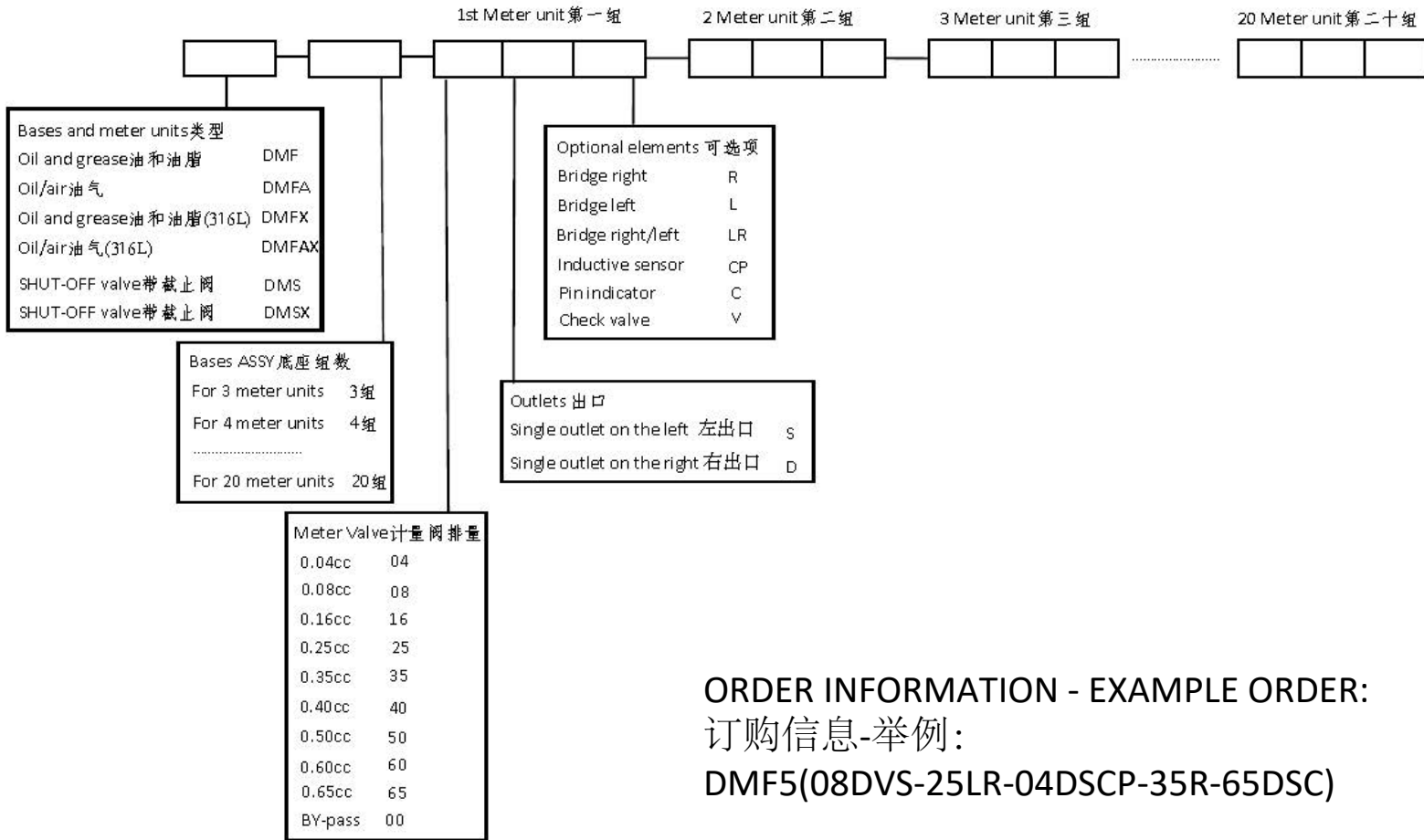
We suggest to discover the reason and the location of the fault before actuating the lever. 我们建议在动杠杆之前，先找出故障的原因和位置。

#### Ordering codes

Code	Pressure	Code	Pressure
6003071	50 Bar	6003074	150 Bar
6003072	75 Bar	6003075	200 Bar
6003073	100 Bar	6003076	250 Bar

## Metering block assembly order 分配器订购说明

## A (Elements)



**ORDER INFORMATION - EXAMPLE ORDER:**  
**订购信息-举例:**  
**DMF5(08DVS-25LR-04DSCP-35R-65DSC)**

**Attention:** To determine the outlets, take note that the assembly is seen vertically and the outlets are numbered sequentially starting from the top (inlet) from left to right.

A letter, a number or another letter is stamped on each divider element to indicate: 1) series, 2) capacity for each cycle, 3) outlet. The elements in the image are from the DMF series that have the following main characteristics:

1st input element: DMF08 with 2 outlets with a flow rate of 0.08 cm<sup>3</sup>/min each;

The 2nd element is the DMF25 LR which signifies a double right and left bridge for transfer to the subsequent element +0.16 cm<sup>3</sup>/min flow rate for each outlet;

The 3rd element is the DMF25 CC with two outlets with a flow rate of 0.25 cm<sup>3</sup>/min and a Supersensor NO on the right.

注意:要确定出口, 请注意总成是垂直的, 出口是按顺序从顶部(进口)从左到右编号的。

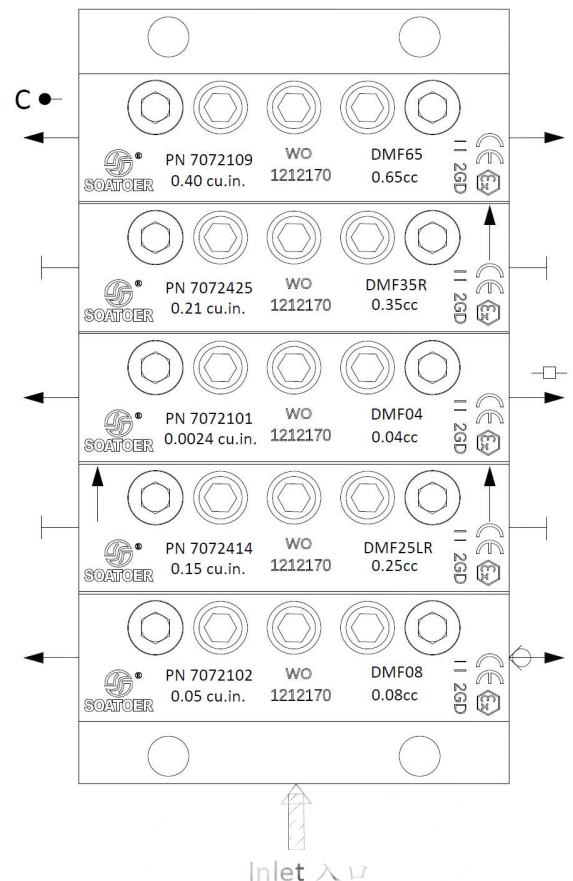
一个字母, 一个数字或另一个字母被印在每个计量元件上, 以表示: 系列, 2) 每个循环的容量, 3) 出口。

图像中的元素来自DMF系列, 具有以下主要特征:

第一个输入元件: DMF 08, 有2个出口, 每个出口的流量为0.08 cm<sup>3</sup>/min;

第二个元件是DMF25 LR, 表示一个双左右桥, 用于转移到后续元件, 每个出口的流量+0.25 cm<sup>3</sup>/min;

第三个元件是DMF25cc, 有两个出口, 流速0.25 cm<sup>3</sup>/min 和一个超级传感器NO在右边

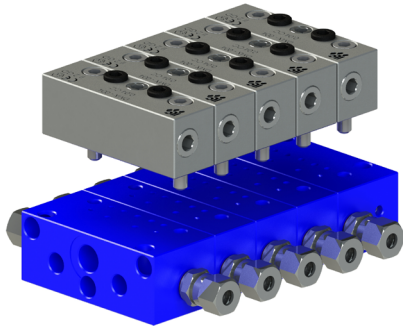




## DMFA

The DMFA model is designed to send a flow of air/oil to specific lubrication points.

DMFA模块的设计目的是将油气输送到指定的润滑点。

**Lubricant economy** 经济的润滑

The oil delivered into air stream is accurately metered. This avoids expensive lubricant waste.

输送到气流中的油是精确计量的。这避免了昂贵的润滑油浪费。

**Lubricant viscosity** 润滑剂粘度

DMFA uses any type of lubricant with viscosity between 15 e 1000 cSt at a fluids working temperature between 0°C - 80°C .

DMFA

使用粘度在15e1000cst之间、工作温度在0°C-80°C之间的任何类型的润滑剂。

with oil viscosity between 32 e 320 cSt at a temperature 40°C. The best conditions are obtained .

在40°C的温度下，油的粘度在32 e 320 cSt之间。得到了最佳条件。

Soatoer has an entire range of personalised solutions for air-oil lubrication of the bearings in steel and aluminium processing machinery.

Soatoer为钢和铝加工机械的轴承提供全方位的气油润滑解决方案。

- 1、 Aluminum rolling mill 铝轧机
- 2、 Steel mill 钢铁轧机
- 3、 Continuous casting line 连铸线

.....

**Cooling and retaining action** 冷却和保持动作

The continuous supply of a mixed air stream, besides lubricating, it has also a cooling effect. The over-pressure inside the lubricated element, prevents the ingress of foreign bodies. prevent the access of foreign body.

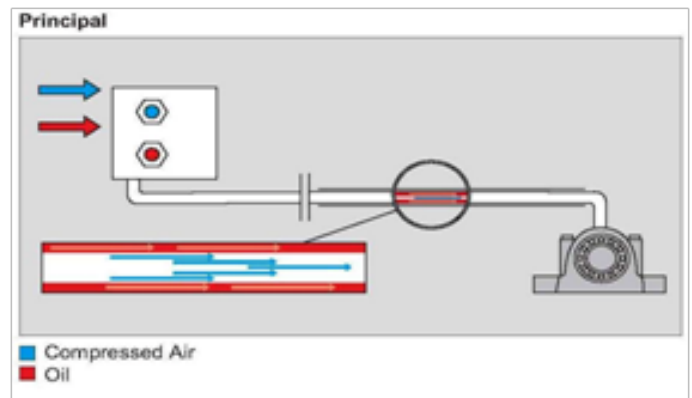
混合气流的连续供应，除了润滑外，还具有冷却作用。润滑元件内部的超压，防止异物进入。防止异物进入。

The air-oil system does not produce oil mist and therefore does not produce fogging. The constant air flux helps lubricant advancement along the internal walls. When the lubricant reaches the final point is spread in particles.油气系统不会产生油雾，因此不会产生雾。恒定的空气流量有助于润滑油沿内壁前进。当润滑剂到达最后一点时，就会扩散成颗粒。

**Functioning control** 功能控制

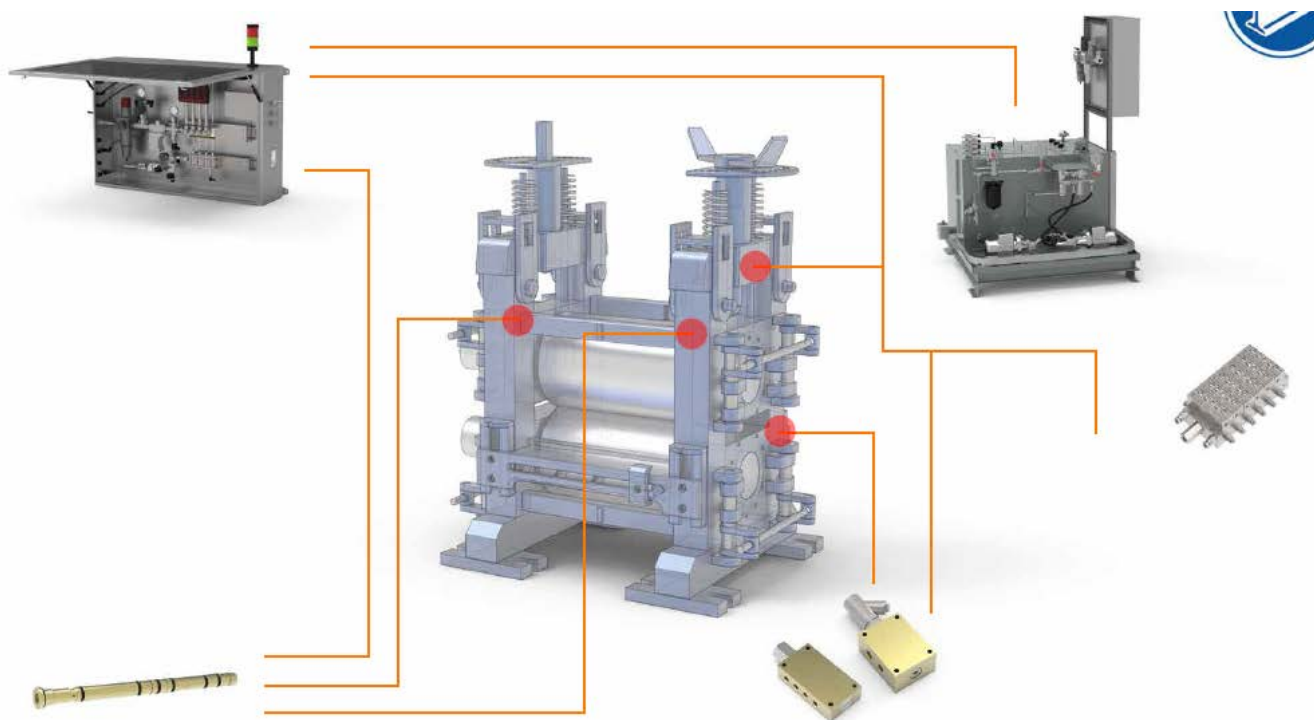
Thanks to the progressive system, the malfunctioning of a metering element is reported by a control device.

由于是递进系统，计量元件的故障由传感器发出信号。

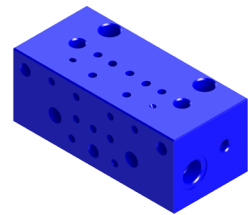
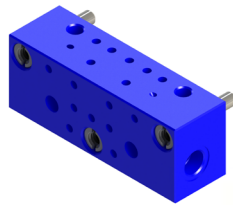
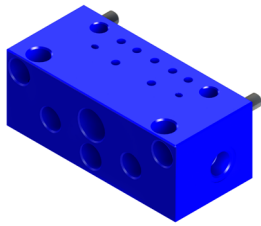


## Application fields 应用领域

- Lubrication of high speed rotating elements. Due to high centrifuge power, the lubricating film between the elements is carried off, so a constant distribution of small quantities of lubricant is required.  
高速旋转元件的润滑。由于离心功率高，元件之间的润滑膜被剥离，因此需要不断分布少量润滑油。
- Lubrication of machinery parts working at high temperatures where the lubricant tends to be dried or burned. 在高温下工作的机械部件的润滑，在高温下润滑剂容易干燥或燃烧。
- Spray lubrication of chains or gears. 链条或齿轮喷油润滑。
- Lubrication of slides and ways which require a thin film of lubricant all over their surface.  
需要在滑块表面涂上一层薄薄的润滑剂的滑轨和方法的润滑。
- Lubrication of bearings which need protection for dust infiltration, water or other damaging substances. The mixed air flow creates a slight over pressure inside the lubricated element, preventing the intrusion of other polluted bodies.  
需要防止灰尘渗入、水或其他有害物质的轴承润滑。混合的气流在润滑元件内部产生轻微的过压，防止其他污染物体的侵入
- Lubrication of point which cannot be reached by traditional lubrication system, where only an oil spray can solve the problem.  
润滑点，这是传统润滑系统无法达到的，在那里只有一个油喷雾一个解决问题。



Single bases 单个的底座

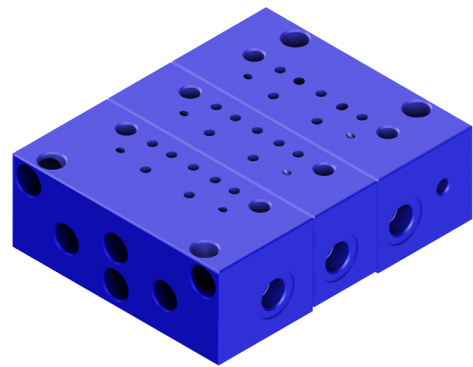


<b>Code</b>	7073141	<b>Code</b>	7073143	<b>Code</b>	7073145
Description 描述	Initial base 入口底座	Description 描述	Intermediate base 中间底座	Description 描述	Final base 末端底座

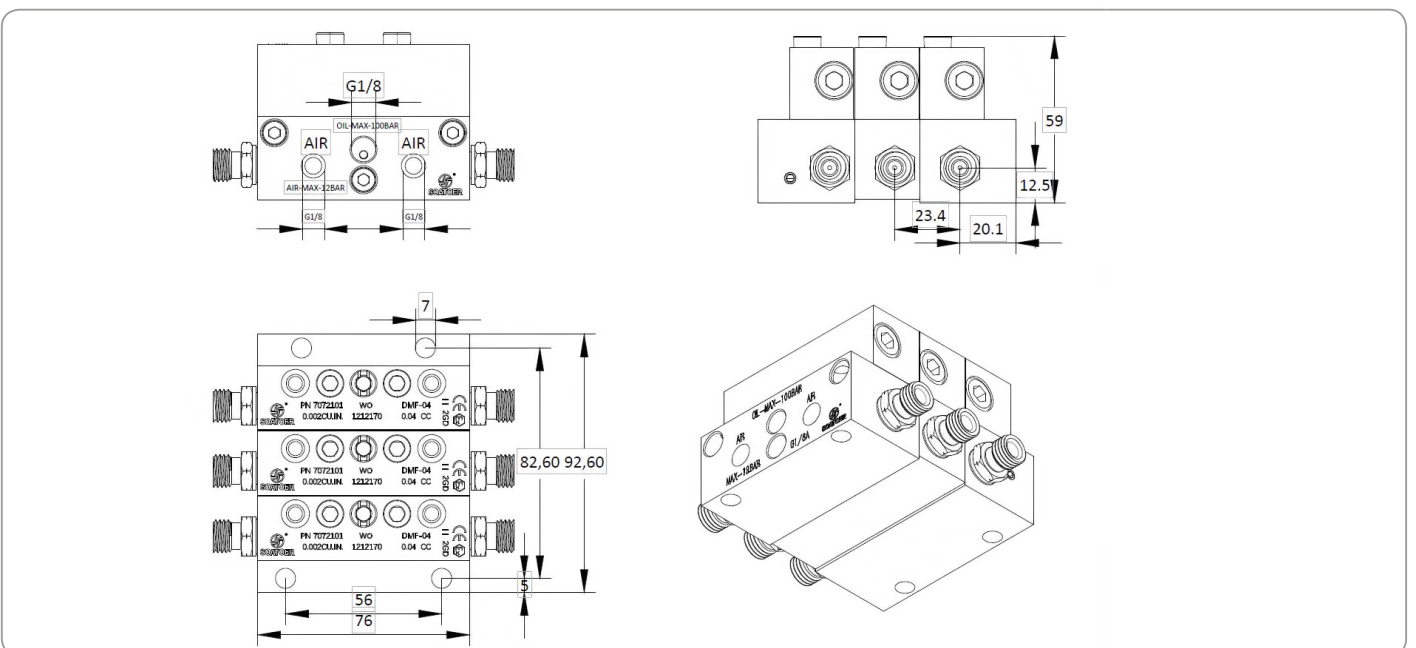
Assembly 组成

DMFA

Code 订货号	Assembled bases 组数
7073201	3
7073202	4
7073203	5
7073204	6
7073205	7
7073206	8
7073207	9
7073208	10



DMFA03



## Connections 连接

in addition to the lubricant inlet configuration the DMFA has two inlets for the air supply. All the threads are 1/8 BSP.  
除了润滑油入口配置，DMFA有两个空气供应入口。所有螺纹均为1/8 BSP

The two pneumatic lines respectively supply the right and left side outlets of the distributor. The supply of both is not required.

As shown in the picture below, the operating pressure in the lubricant line must not exceed 100 bar.  
这两条气动管路分别供给分配器的左右出风口。两者的供应都是不需要的。  
如下图所示，润滑管路中的工作压力不得超过100bar。

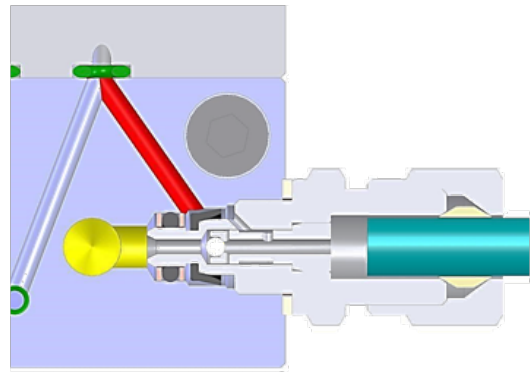
It is important to order specific outlet fittings both for a mixed output and a oil one. The two fitting models are supplied with a check valve to separates the two flows up the pipe and to prevent any backflow of lu-bricant in the pneumatic line.  
重要的是，为混合输出和石油输出订购特定的出口配件。这两种型号的配件都配有一个止回阀，以分离管道上的两种流体，并防止气动管路中的润滑油回流。

## Outlet fittings 输出接头

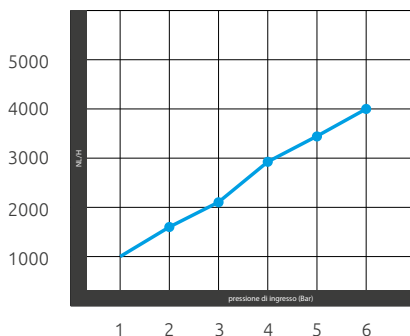


## Outlet air-oil mixing fittings 输出油气接头

Model	Ø Tube	Code
Air-oil outlet	6 mm	5011004
Oil outlet	6 mm	5011005



## DMFA element air consumption DMFA分配器耗气量

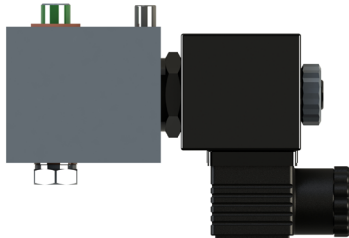


The Normal liter/hour air consumption depends on applied pressure, users number and point connection tube diameter (be careful in case of spray, nozzle diameter must be kept into account).正常升/小时的空气消耗量取决于施加压力、用户数量和点连接管直径(以防喷雾时要小心，喷嘴直径必须考虑在内)。

The maximum lubricant-line working pressure must not exceed 100 bar.  
润滑油管路的最大工作压力不得超过100bar。

Shut-off Valves 截止阀

Ordering codes 订购信息



In **air-oil** systems the single or grouped metering valves selection is even more important.

在气-油系统中，单个或组合计量阀的选择甚至更为重要。

In some common application field as for Siderurgi-cal Facilities, EV-2 valves are required due to circuit length or the needing for system section exclusion.

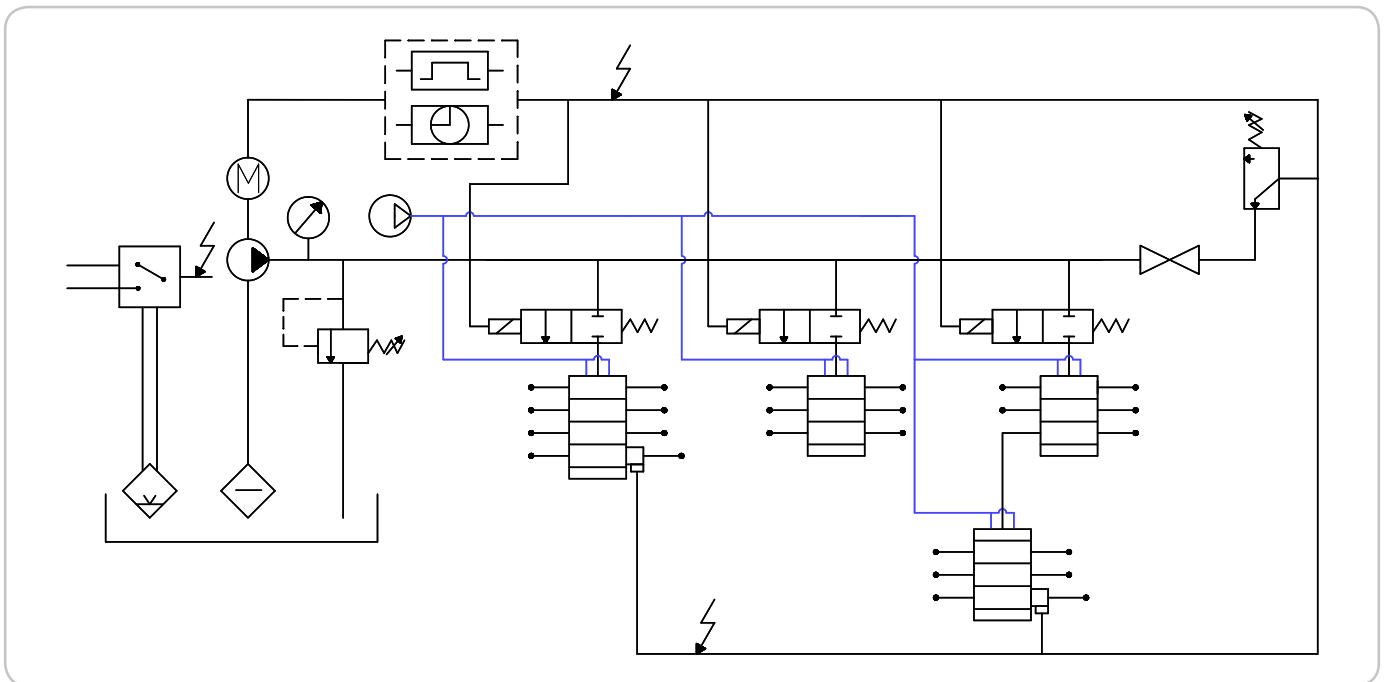
在一些常见的应用领域，如锡德里克设施，由于管路长度或需要系统部分控制，EV-2阀门是必需的。

Ordering codes 订货号

**5004002** 24 V DC

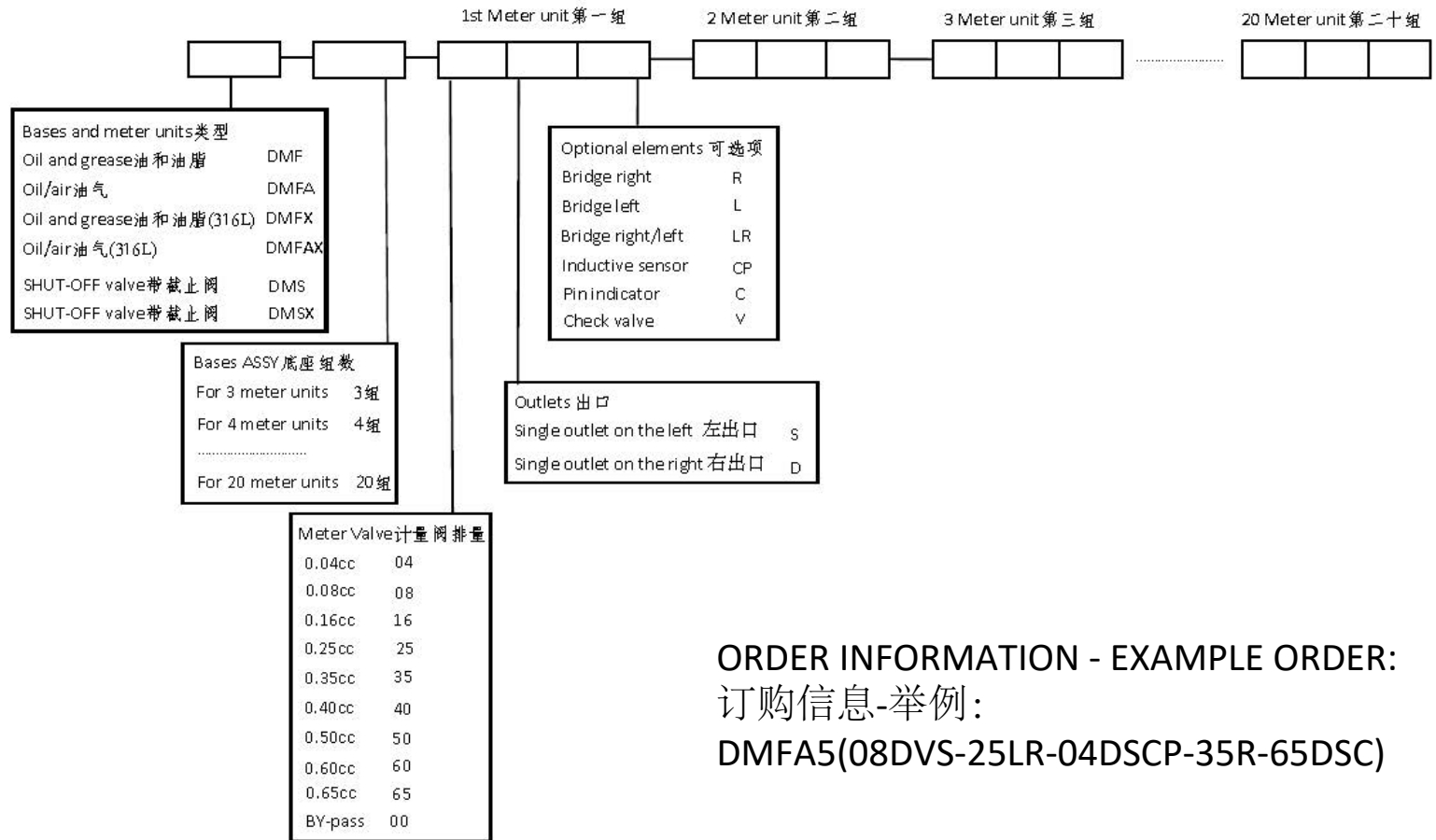
**5004003** 115 V AC

**5004004** 230 V AC



Metering block assembly order 计量块装配顺序

A (Elementi)



ORDER INFORMATION - EXAMPLE ORDER:  
 订购信息-举例:  
 DMFA5(08DVS-25LR-04DSCP-35R-65DSC)

**Attention:** To determine the outlets, take note that the assembly is seen vertically and the outlets are numbered sequentially starting from the top (inlet) from left to right.

A letter, a number or another letter is stamped on each divider element to indicate: 1) series, 2) capacity for each cycle, 3) outlet. The elements in the image are from the DMF series that have the following main characteristics:

1st input element: DMF08 with 2 outlets with a flow rate of 0.08 cm<sup>3</sup>/min each;

The 2nd element is the DMF25 LR which signifies a double right and left bridge for transfer to the subsequent element +0.16 cm<sup>3</sup>/min flow rate for each outlet;

The 3rd element is the DMF25 CC with two outlets with a flow rate of 0.25 cm<sup>3</sup>/min and a Supersensor NO on the right .

注意:要确定出口, 请注意总成是垂直的, 出口是按顺序从顶部(进口)从左到右编号的。

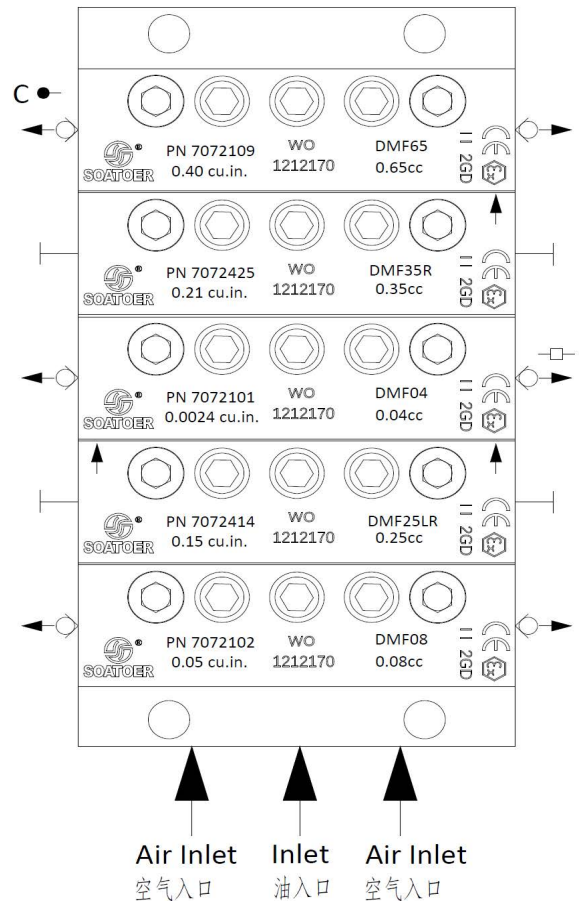
一个字母, 一个数字或另一个字母被印在每个计量元件上, 以表示: 系列, 2)每个循环的容量, 3)出口。

图像中的元素来自DMF系列, 具有以下主要特征:

第一个输入元件:DMF 08, 有2个出口, 每个出口的流量为0.08 cm<sup>3</sup>/min;

第二个元件是DMF25 LR, 表示一个双左右桥, 用于转移到后续元件, 每个出口的流量+0.25 cm<sup>3</sup>/min;

第三个元件是DMF25cc, 有两个出口, 流速0.25 cm<sup>3</sup>/min和一个超级传感器NO在右边



Soatoer Fluid System (Shanghai) Co.,Ltd -201612Songjiang Shanghai -China

Tel:+86 21 54888200 - Fax: +86 21 54888020 - [www.soatoer.com](http://www.soatoer.com)-[sales@soatoer.com](mailto:sales@soatoer.com)