

- 超超薄结构，适合普通油缸无法应用的极限空间

Flat design for ultra space

- 超高液压，体积小、重量轻、承载力大

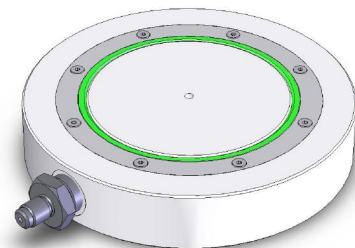
Ultra pressure, low height

- 单作用无行程限位，负载回程

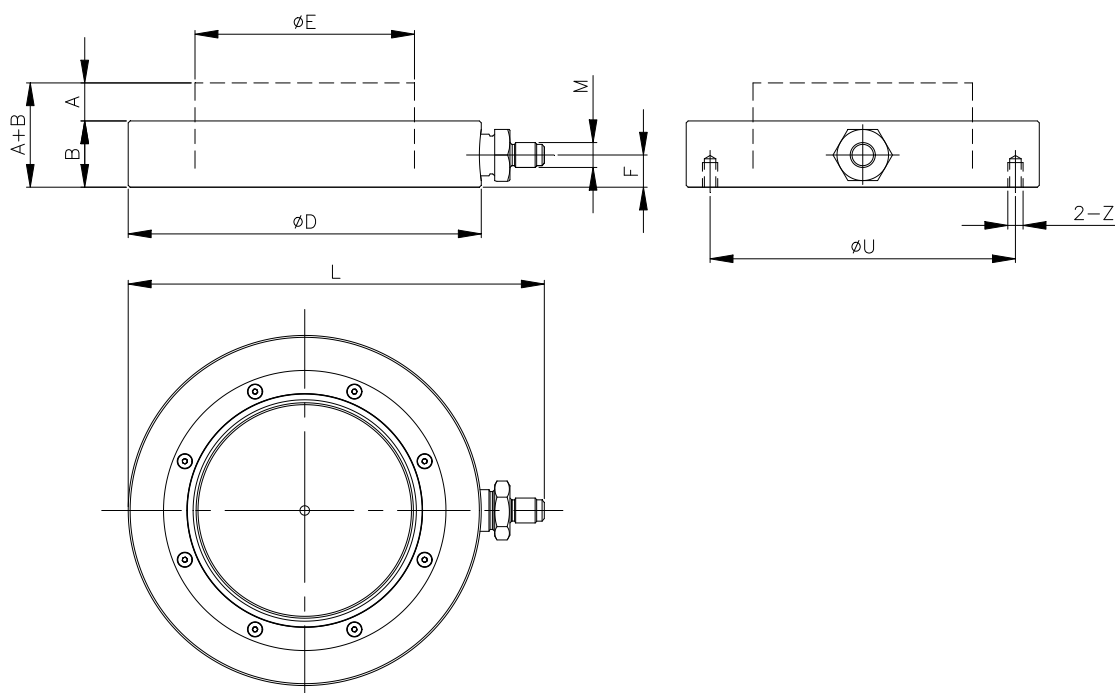
Single acting, load return

- 使用时避免偏心负载

Avoiding side load when using



### 1. 标准型技术参数 Technical parameters of CUP series

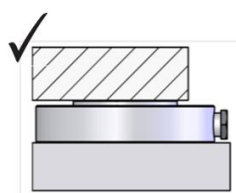


型号 Model Number	CUP10015	CUP15015	CUP20015
最大推力 Max. Push (kN)	1004	1570	2076
工作压力 Work Pressure (MPa)	200	200	200

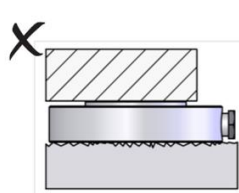
行程 Stroke (mm)	A	15	15	15
本体高度 (mm)	B	35	35	35
底板 (可选) Steel Base (option) (mm)	C	15	15	15
外径 O.D (mm)	D	158	170	185
活塞直径 Rod (mm)	E	80	100	115
工作面积 Effective Area (cm <sup>2</sup> )		50.24	78.5	103.8
接头高度 Base to port (mm)	F	17	17	17
接口螺纹 Port thread	M	G1/4	G 1/4	G 1/4
含接头长度 Width (mm)	L	191	203	218
安装孔分布圆 Pitch Dia. (mm)	U	125	145	160
安装孔尺寸 Base mounting holes	Z	M8×13	M8×13	M8×13
需油量 Oil Capacity (L)		0.08	0.12	0.16
重量 Weight (kg)		5.3	6.1	7.2

### 重要提示

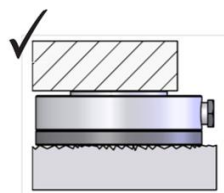
油缸支撑面必须坚实平整，绝对不允许油缸柱塞在底部投影面积无支撑的情况下使用，如遇支撑面不平整或支撑面无法完全支撑油缸底面时必须加垫板使用。



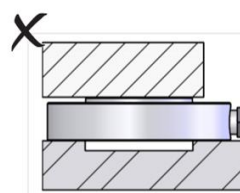
平整坚实面



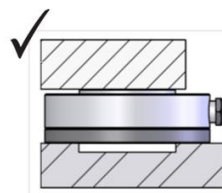
不平整面



不平整面加垫板



支撑面不完全

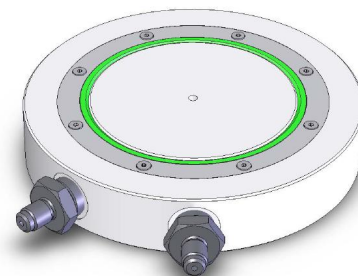
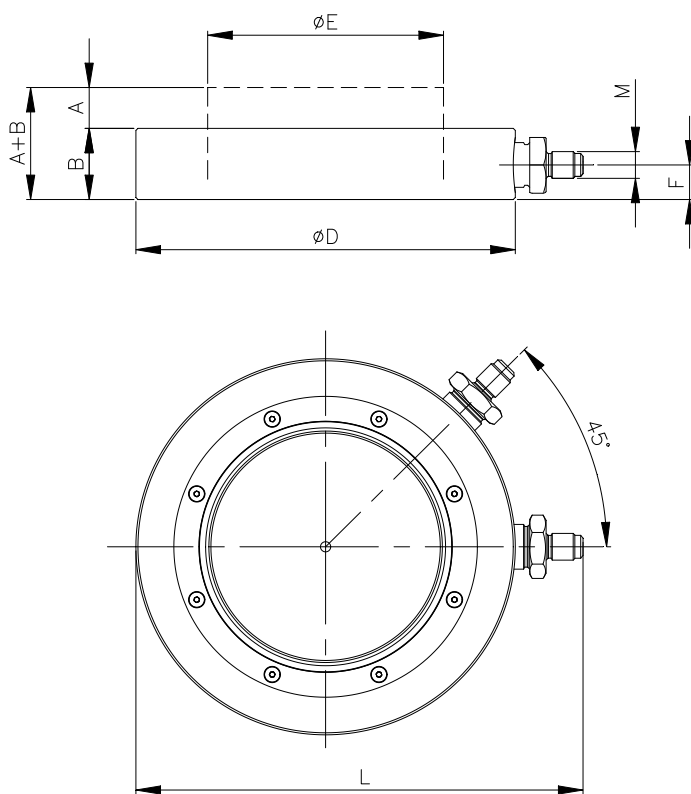


不全面加垫板

CU 系列超高压超超薄油缸  
 CU series ultra flat cylinder

L13001.1  
 V1.0  
 32/2013

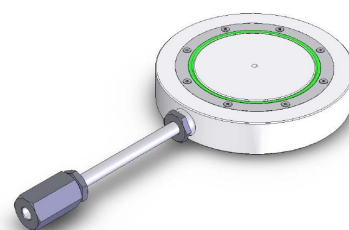
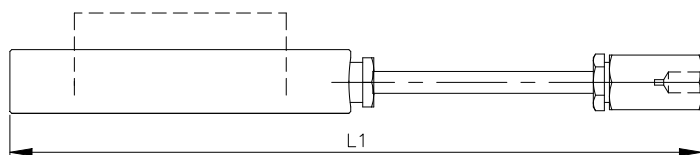
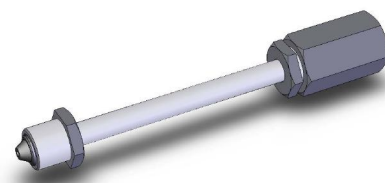
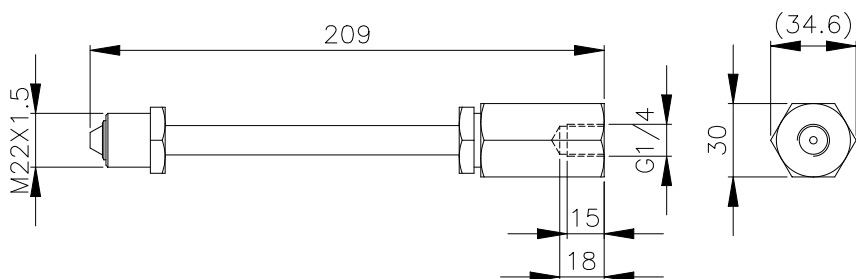
2. 双油口型技术参数 Technical parameters of CUT series



型号 Model Number	CUT10015	CUT15015	CUT20015
	其他参数与 CUP 型相同 Other parameters refer to CUP series		

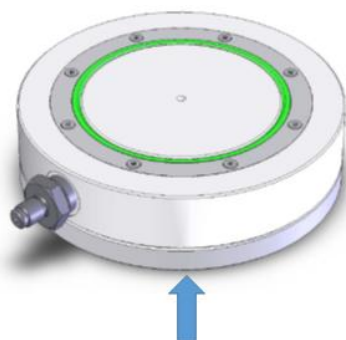
### 3. 可选配件 Accessories (Option)

#### 3.1. 加长接头套件型号 Model number: FUA22-04



		CUP10015 CUT10015	CUP15015 CUT15015	CUP20015 CUP20015
含接头长度 Width (mm)	<b>L1</b>	348	360	375

#### 3.2. 油缸底板 Accessories, steel base for CU series (Option)



适用油缸 Cylinder applied		CUP10015	CUP15015	CUP20015
底板型号 Model Number		BPC100	BPC150	BPC200
底板厚度 Thickness (mm)	<b>G</b>	15	15	15
安装螺钉 (数量 2) Bolts: 2		CM0816028 (M8×16)		