



User's Manual V3.05 Signal Source Models

APSIN, APSYN, APMSYN, APGEN, APMS, APULN



MANUFACTURER ADDRESS

AnaPico AG
Europa-Strasse 9
8152 Glattbrugg
Switzerland
Tel.:+41 44 440 00 50
e-mail: support@anapico.com
Website: www.anapico.com

WARRANTY

All AnaPico instruments are warranted against defects in material and workmanship for a period of two years from the date of shipment. AnaPico will, at its option, repair or replace products that prove to be defective during the warranty period, provided they are returned to AnaPico and provided the preventative maintenance procedures are followed. Repairs necessitated by misuse of the product are not covered by this warranty. No other warranties are expressed or implied, including but not limited to implied warranties of merchantability and fitness for a particular purpose. AnaPico is not liable for consequential damages. The warranty on the internal rechargeable batteries (option B3) is one year from the date of shipment. Battery replacement is available through AnaPico and its distributors.

IMPORTANT! PLEASE READ CAREFULLY

COPYRIGHT

This manual is copyright by AnaPico AG and all rights are reserved. No portion of this document may be reproduced, copied, transmitted, transcribed, stored in a retrieval system, or translated in any form or by any means such as electronic, mechanical, magnetic, optical, chemical, manual or otherwise, without written permission of AnaPico AG.

Table of Contents

GENERAL REMARKS	5
VALIDITY OF THIS MANUAL	5
AVAILABLE CASING	5
<i>Compact Portable Case (CPC)</i>	5
<i>1U Rackmount (1URM)</i>	5
<i>1U Case (1URM)</i>	6
<i>Desktop Case (LH)</i>	6
<i>Module</i>	6
DATA CONNECTIONS	7
SIGNAL CONNECTIONS	7
TRANSPORTATION	7
SAFETY INFORMATION	8
SIGNAL SYMBOL	8
LABELS ON PRODUCTS	8
GENERAL SAFETY CONSIDERATIONS	9
TECHNICAL SPECIFICATIONS	10
DIMENSIONS	10
<i>CPC</i>	10
<i>1URM</i>	10
CONNECTORS	10
<i>CPC</i>	10
<i>1URM - APSIN</i>	13
<i>1URM – APMS / APSYN140</i>	14
<i>CPC with Touch display</i>	15
<i>Desktop</i>	17
MINIMUM DISTANCES	18
ENERGIZING AND DE- ENERGIZING	19
PROPER OPERATION CONDITIONS	21
ENVIRONMENTAL INFORMATION	21
INTRODUCTION	22
INCLUDED MATERIAL	22
GENERAL FEATURES AND FUNCTIONS (MODEL OVERVIEW)	22
OPTIONS	23
GETTING STARTED	24

SYSTEM REQUIREMENTS	24
UNPACKING THE INSTRUMENT	24
INITIAL INSPECTION.....	24
STARTING THE INSTRUMENT	24
<i>Applying Power</i>	24
<i>Connecting to LAN</i>	24
<i>Direct connectivity to host via Ethernet cable (no router)</i>	25
<i>Connecting through USB</i>	25
<i>Connecting through GPIB</i>	25
<i>Installing the APSIN Remote Client</i>	25
<i>Troubleshooting the LAN Interconnection</i>	25
<i>Shutting Down the Signal Generator</i>	26
USING THE GRAPHICAL USER INTERFACE (GUI)	27
START THE SIGNAL GENERATOR (SG) GUI.....	27
GENERAL LOOK	27
<i>Simultaneously controlling Multiple Signal Generators from one PC</i>	28
<i>Store and Load Instrument States</i>	28
<i>Setting Network Configuration</i>	29
<i>Multi-Session Option</i>	29
<i>Device Port Setting</i>	29
<i>Connecting to devices using a non-default port</i>	30
<i>Setting the GPIB Address</i>	31
PERFORM FIRMWARE UPGRADE	31
MULTI-OUTPUT GUI CONTROL	31
COMBINED MODULATION.....	33
LOCAL OPERATION VIA FRONT PANEL	35
DISPLAYED PARAMETER FORMATS	36
CW DISPLAY	36
<i>Main Menu Display</i>	37
<i>Frequency Sweep Submenu</i>	37
<i>Power Sweep Submenu</i>	38
<i>List Sweep Submenu</i>	38
MODULATION SUBMENU.....	39
<i>Pulse Modulation Submenu</i>	39
<i>Amplitude Modulation Submenu</i>	39
<i>Frequency Modulation Submenu</i>	39

<i>Phase Modulation Submenu</i>	39
REFERENCE SUBMENU	40
TRIGGER SUBMENU	40
LF OUTPUT SUBMENU	40
LAN CONFIGURATION SUBMENU	41
DISPLAY SETTINGS SUBMENU	41
<i>Save Settings Submenu</i>	41
<i>Load Settings Submenu</i>	41
<i>Load Defaults Submenu</i>	41
HELP SUBMENU	41
REMOTE PROGRAMMING THE SIGNAL GENERATOR	42
BATTERY OPERATION (B3 OPTION)	43
EXTENDED POWER RANGE (PE3 OPTIONS)	45
MAINTENANCE AND WARRANTY INFORMATION	46
ADJUSTMENTS AND CALIBRATION	46
REPAIR	46
WARRANTY INFORMATION	46
EQUIPMENT RETURNS	46
APPENDIX A	47

General Remarks

The devices described in this manual are signal generators that produce electromagnetic signals from 9 kHz up to 40 GHz with a power from -90 dBm up to +25 dBm. The exact range depends on the chosen device model and options. The devices can produce different types of modulations, such as AM, FM, PM Pulse or Chirp.

They can be used in a variety of applications such as research and development or manufacturing and testing of electronic components.

Options, such as a 1URM Case, an intern rechargeable battery, a GPIB interface or different types of power range extensions can be added.

Validity of this Manual

This manual is valid for the following devices and theirs extended versions:

- APSIN2010, 4010, 6010
- APSIN12G, 20G, 26G
- APULN6, 12, 20, 26, 40
- APSYN420, APSYN140
- APSYN420-2, APSYN140-X
- APMSYN, APMQS, APUASYN
- APMS06G-X, 12G-X, 20G-X, 33G-X, 40G-X

Available Casing

The devices are available in the following cases.

Compact Portable Case (CPC)



Figure 1: APSIN26G & APULN40 in a Compact Portable Case (with LCD and touch display, respectively)

1U Rackmount (1URM)



Figure 2: APSIN26G in a 1URM Case

1U Case (1URM)



Figure 3: APSMXXG-4 (and APSYN140-4) in a 1URM case

Desktop Case (LH)



Figure 4: APSIN/APULN in a Desktop Case

Module



Figure 5: APMSYN as a compact module

Data Connections

The devices may only be connected to a network or a computer by using a shielded LAN cable. Unless shorter lengths are prescribed, a maximum length of 3 m must not be exceeded for the LAN and the USB connection.

Signal Connections

In general, all connections between the signal generator and another device should be made as short as possible and must be well shielded. It is recommended to use a high-quality cable with low loss especially for frequencies above 20 GHz.

Transportation

The devices must only be transported with the packaging supplied by the manufacturer. The device can be lifted up or transported in any orientation.

Safety Information

The following pieces of information are important to prevent personal injury, loss of life or damage to the equipment. Please read them carefully. If the device is used in a manner not specified by this manual, the protection provided by the device may be impaired.

Signal Symbol

In this manual, the following symbols are used to warn the reader about risks and dangers.



DANGER denotes a hazard for personal health or life.



WARNING denotes a risk or danger, that could damage the device.

Labels on Products

The following labels are on the products. Familiarize yourself with the meaning of each of the labels before using the product.

	Direct Current (DC)
	Alternating Current (AC)
	Earth (Ground)
	EU label for separate collection of electrical and electronic waste.
	Caution, general danger zone. Attend the manual and/or a notice on the device.

General Safety Considerations

FCC notice

This equipment has been tested and found to comply with the limits for a Class A device, pursuant to **Part 15 of the FCC Rules**. These limits are designed to provide reasonable protection against harmful interference when the equipment is operated in a commercial environment. This equipment generates, uses, and can radiate radio frequency energy and, if not installed and used in accordance with the instruction manual, may cause harmful interference to radio communications.

Operation of this equipment in a residential area may cause harmful interference in which case the user will be required to correct the interference at his or her expense.



The instrument meets the EMC directive and the Low Voltage Directive described in the CE declaration in **Error! Reference source not found.**



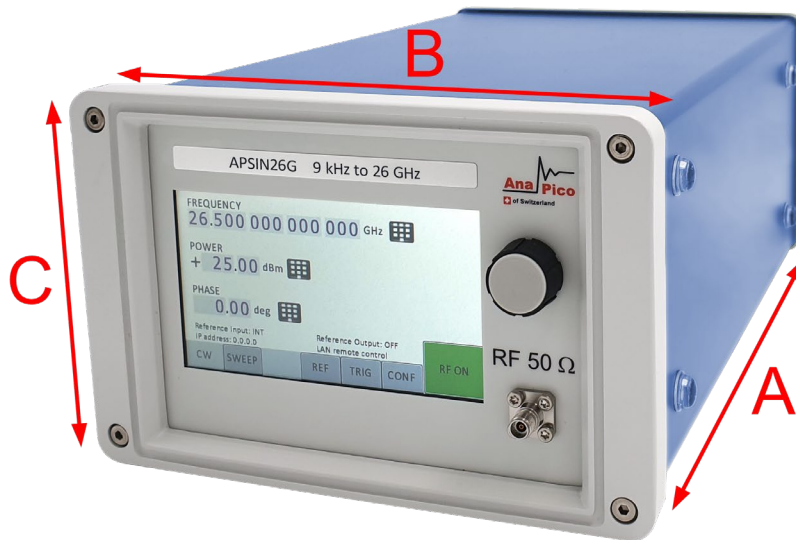
If products or their components are mechanically and/or thermally processed in a manner that goes beyond their intended use, hazardous substances (heavy-metal dust such as nickel) may be released. For this reason, the product may only be disassembled or opened by specially trained personnel. Improper disassembly may be hazardous to your health. National waste disposal regulations must be observed.

Technical Specifications

Dimensions

CPC

Dimensions of the compact portable case:



A =
262mm (APSIN),
292mm (APULN)
B = 174mm
C = 116mm
Weight: < 2.5kg

1URM

Dimensions of the 1URM:



A = 483mm
B = 44mm
C = 480mm
Weight: < 7.0kg

Connectors

CPC

The front panel contains a status display (only in CPC), RF output female N-type connector (APSINX010), a female SMA connector (APSINXXG, APULN06,12,20,26, APMSXXG, APSYN), or a K connector (APULN40) and an

RF on/off key. The LCD screen shows information on the current function. Information includes status indicators, frequency and amplitude settings, current connectivity status, and error messages. Five control buttons allow easy menu control.

Front panel

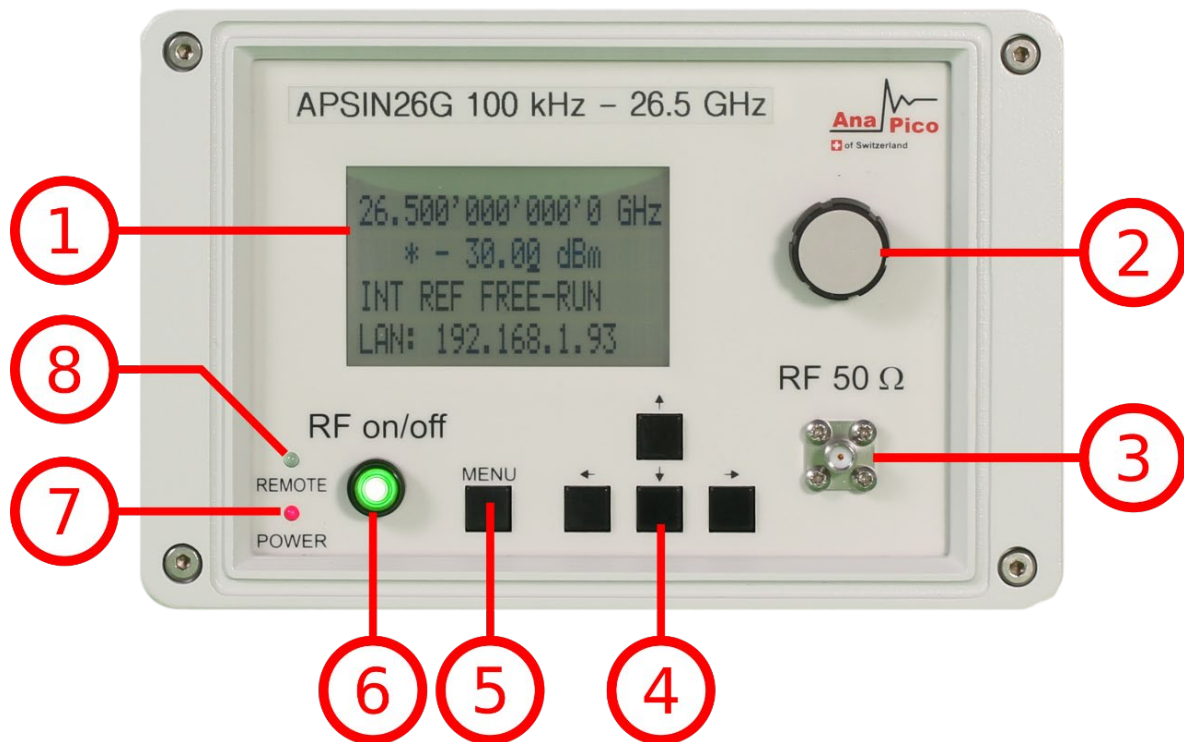


Figure 6: APSIN Front Panel View (Model APSIN26G)

1. **Main LCD display** The main display shows the following information:
 - 1st line: RF frequency in Hz
 - 2nd line: RF amplitude in dBm
 - 3rd line: Frequency reference status (internal, external, lock status)
 - 4th line: Remote control status
2. **Rotary Button** The rotary button is used to change the value selected on the screen.
3. **RF 50 Ω connector** This female N- type respectively SMA connector provides the output for generator signals. The impedance is 50 ohm. The reverse power damage level is +30 dBm maximum. The maximum allowed DC level is +/- 10 V. Please check the data sheets for more details.
4. **Menu Buttons** The menu buttons are used to change the selected menu point or value.
5. **Main Menu Button** The main menu button is used to enter the menu.
6. **RF On/Off button** The **ON/OFF** key toggles between RF output on and RF output off. The green light is indicating whether the RF output is enabled (light on) or disabled (light off).
7. **Power LED** The power LED is indicating whether the device is on or off.
8. **Remote LED** The remote LED is indicating whether the device connected to a Computer or not.

Rear panel

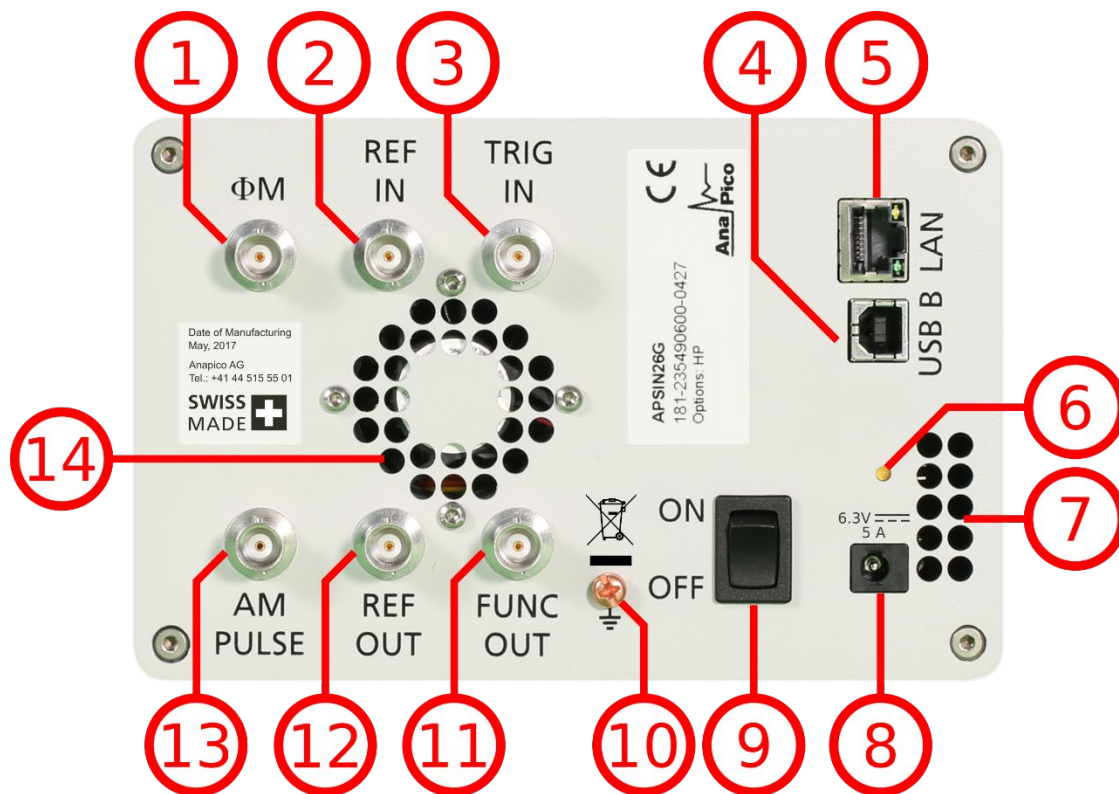


Figure 7: APSIN Rear Panel View (Model APSIN26G)

1. **ΦM** This BNC female Connector is the input for FM and PM.
2. **REF IN** This BNC female Connector is the input for the reference signal.
3. **TRIG IN** This BNC female Connector is the trigger input.
4. **USB B** The USB B connector is used to connect the device to a computer.
5. **LAN** The LAN connector is used to connect the device to a network.
6. **Battery LED** In case the device has a rechargeable battery, this LED indicates whether the battery is charged or not.
7. **Fan Holes** The holes by which the air is intake.
8. **Power Supply** apply the AnaPico power adaptor to this connector to supply the device with energy.
9. **ON/OFF Switch** Turns the device on or off.
10. **Ground Screw**
11. **FUNC OUT** This BNC female Connector is the output for the function signal.
12. **REF OUT** This BNC female Connector is the output for the reference signal.
13. **AM PULSE** This BNC female Connector is the input for the AM and the PULSE Modulation signal.
14. **Fan Holes** The holes by which the air is extruded.

1URM - APSIN

Front panel

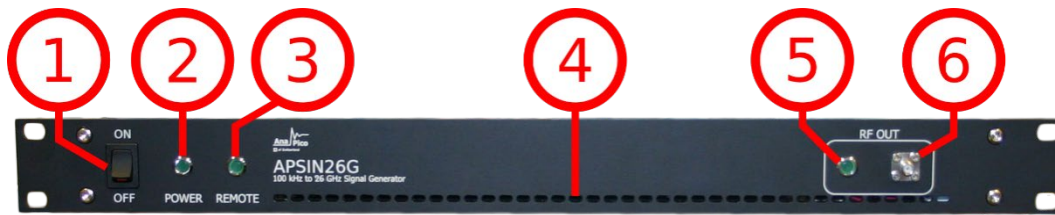


Figure 8: APSIN 1URM Front Panel View (Model APSIN26G-1URM)

1. **ON/OFF Switch** Turns the device on or off.
2. **Power LED** The power LED is indicating whether the device is on or off.
3. **Remote LED** The remote LED is indicating whether the device connected to a Computer or not.
4. **Fan Holes** The holes by which the air is intake.
5. **RF LED** This LED indicates whether the RF signal in on or off.
6. **RF 50 Ω connector** This female N- type respectively SMA connector provides the output for generator signals. The impedance is 50 ohm. The reverse power damage level is +30 dBm maximum. The maximum allowed DC level is +/- 10 V. Please check the data sheets for more details.

Rear Panel

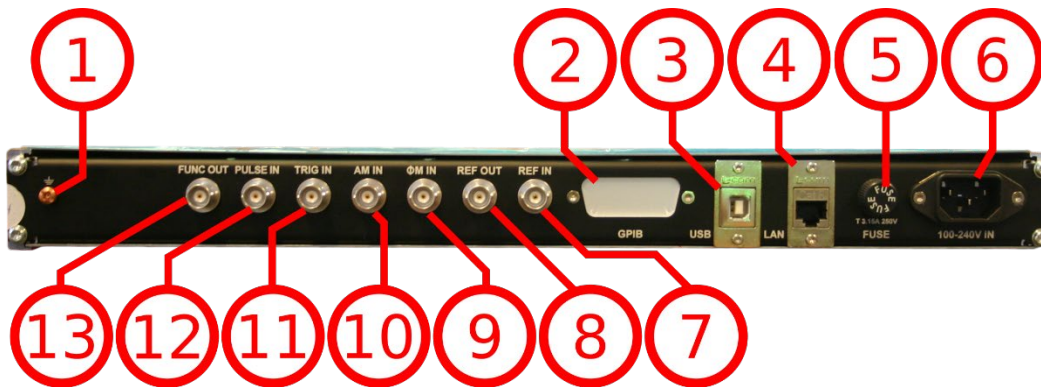


Figure 9: APSIN 1URM Rear Panel View

1. **Ground Screw**
2. **GPIB Connector** In case the device has the option "GPIB", on this position is the GPIB connector.
3. **USB B** The USB B connector is used to connect the device to a computer.
4. **LAN** The LAN connector is used to connect the device to a network
5. **FUSE Holder** This holder contains an exchangeable fuse.
6. **Power Supply** apply the voltage, specified below, to supply the device with energy.
7. **REF IN** This BNC female Connector is the input for the reference signal.
8. **REF OUT** This BNC female Connector is the output for the reference signal.

9. **FM** This BNC female Connector is the input for FM and PM.
10. **AM IN** This BNC female Connector is the input for the AM signal.
11. **TRIG IN** This BNC female Connector is the trigger input.
12. **PULSE** This BNC female Connector is the input for the PULSE Modulation signal.
13. **FUNC OUT** This BNC female Connector is the output for the function signal.

1URM – APMS / APSYN140

Front panel

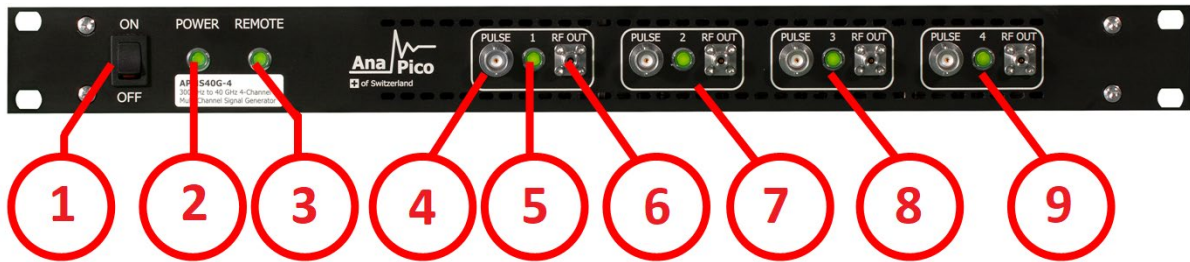


Figure 10: APSIN 1URM Front Panel View (Model APSIN26G-1URM)

1. **ON/OFF Switch** Turns the device on or off.
2. **Power LED** The power LED is indicating whether the device is on or off.
3. **Remote LED** The remote LED is indicating whether the device connected to a Computer or not.
4. **Channel 1: PULSE** This BNC female Connector is the input for the PULSE Modulation signal
5. **Channel 1: RF LED** This LED indicates whether the RF signal in on or off.
6. **Channel 1: RF 50 Ω connector** This female K-type respectively SMA connector provides the output for generator signals. The impedance is 50 ohm. The reverse power damage level is +30 dBm maximum. The maximum allowed DC level is +/- 10 V. Please check the data sheets for more details.
7. **Channel 2**
8. **Channel 3**
9. **Channel 4**

Rear Panel

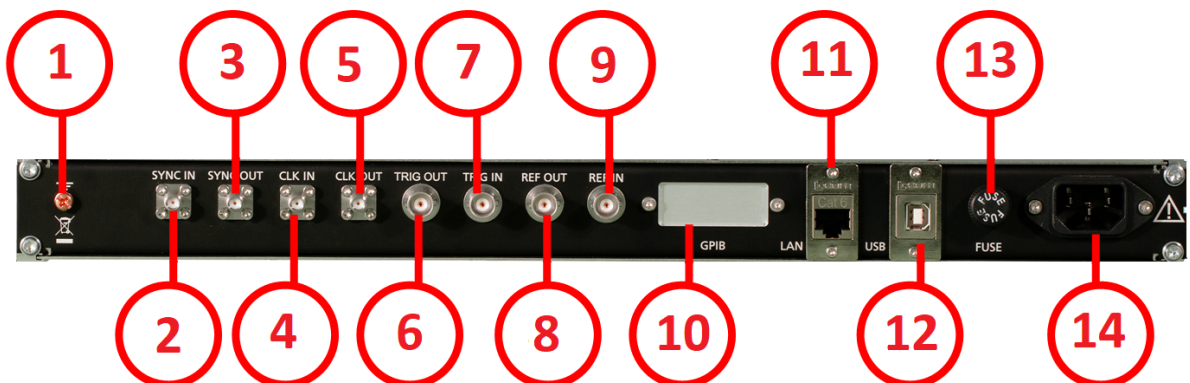


Figure 11: APSIN 1URM Rear Panel View

1. **Ground Screw**
2. **Sync In port** Unit-to-unit synchronization signal input: SMA female
3. **Sync Out port** Unit-to-unit synchronization signal output: SMA female
4. **CLK IN** External 3GHz reference input: SMA female
5. **CLK OUT** Internal 3GHz reference output: SMA female
6. **TRIG OUT** This BNC female Connector is the trigger output.
7. **TRIG IN** This BNC female Connector is the trigger input.
8. **REF OUT** This BNC female Connector is the output for the reference signal.
9. **REF IN** This BNC female Connector is the input for the reference signal.
10. **GPIB Connector** In case the device has the option "GPIB", on this position is the GPIB connector.
11. **LAN** The LAN connector is used to connect the device to a network
12. **USB B** The USB B connector is used to connect the device to a computer.
13. **FUSE Holder** This holder contains a exchangeable fuse.
14. **Power Supply** apply the voltage, specified below, to supply the device with energy.

CPC with Touch display

The front panel contains a touch display, RF output female SMA connector (AP SINXXG, APULN6,12,20,26, APMSXXG, APSYN), or a K connector (APULN40). The touch display shows information on the current function. Information includes status indicators, frequency and amplitude settings, current connectivity status, and error messages.

Front panel



Figure 12: APULN40 Front Panel View

1. **Main touch display** The main display shows information on the current function, such as frequency, power, reference.
2. **Rotary Button** The rotary button is used to change the value selected on the screen.
3. **RF 50 Ω connector** This female SMA respectively K connector provides the output for generator signals. The impedance is 50 ohm. The reverse power damage level is +30 dBm maximum. The maximum allowed DC level is +/- 10 V. Please check the data sheets for more details.

Rear Panel

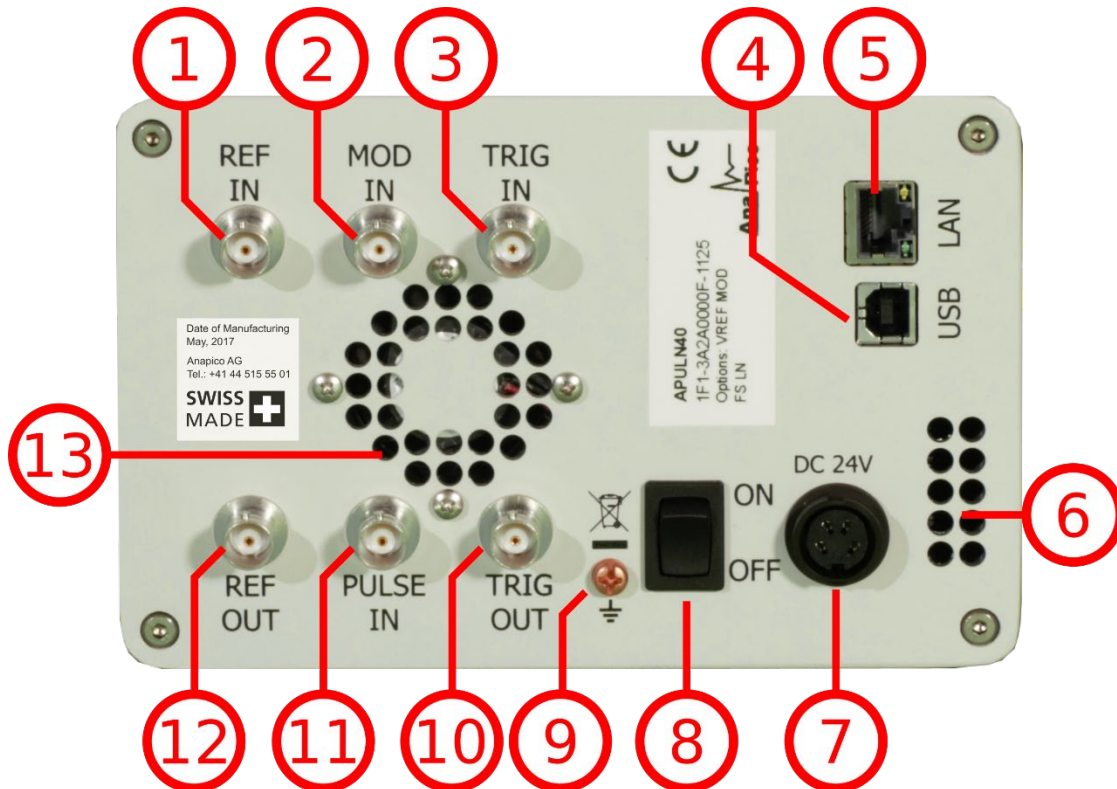


Figure 13: APULN Rear Panel View (Model APULN40)

1. **REF IN** This BNC female Connector is the input for the reference signal.
2. **MOD IN** This BNC female Connector is the input for the modulation signal.
3. **TRIG IN** This BNC female Connector is the trigger input.
4. **USB B** The USB B connector is used to connect the device to a computer.
5. **LAN** The LAN connector is used to connect the device to a network.
6. **Fan Holes** The holes by which the air is intake.
7. **Power Supply** apply the AnaPico power adaptor to this connector to supply the device with energy.
8. **ON/OFF Switch** Turns the device on or off.
9. **Ground Screw**
10. **TRIG OUT** This BNC female Connector is a multi-function output.

11. **PULSE IN** This BNC female Connector is the input for the pulse signal.
12. **REF OUT** This BNC female Connector is the output for the reference signal.
13. **Fan Holes** The holes by which the air is extruded.

Desktop

The front panel contains a touch display, RF output female SMA connector (AP SINXXG, APULN6,12,20,26, APMSXXG, APSYN), or a K connector (APULN40). The touch display shows information on the current function. Information includes status indicators, frequency and amplitude settings, current connectivity status, and error messages.

Front panel

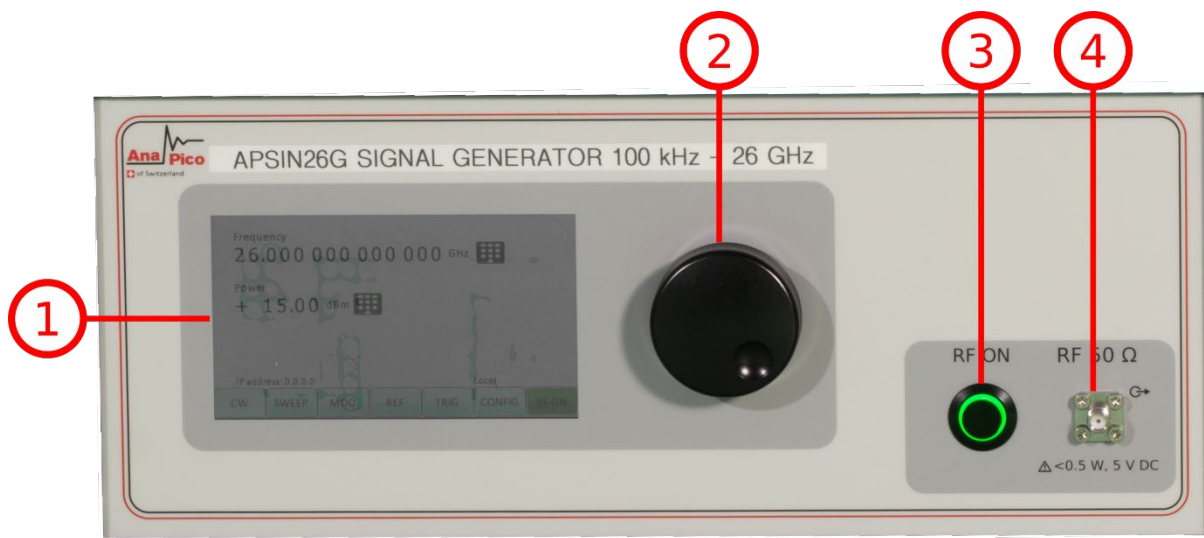


Figure 14: Desktop Front Panel View (Model APSIN26G)

1. **Main touch display** The main display shows information on the current function, such as frequency, power, reference.
2. **Rotary Button** The rotary button is used to change the value selected on the screen.
3. **RF On/Off button** The **ON/OFF** key toggles between RF output on and RF output off. The green light is indicating whether the RF output is enabled (light on) or disabled (light off).
4. **RF 50 Ω connector** This female SMA respectively K connector provides the output for generator signals. The impedance is 50 ohm. The reverse power damage level is +30 dBm maximum. For the maximum allowed DC level please check the data sheet. Please check the data sheets for more details.

Rear Panel

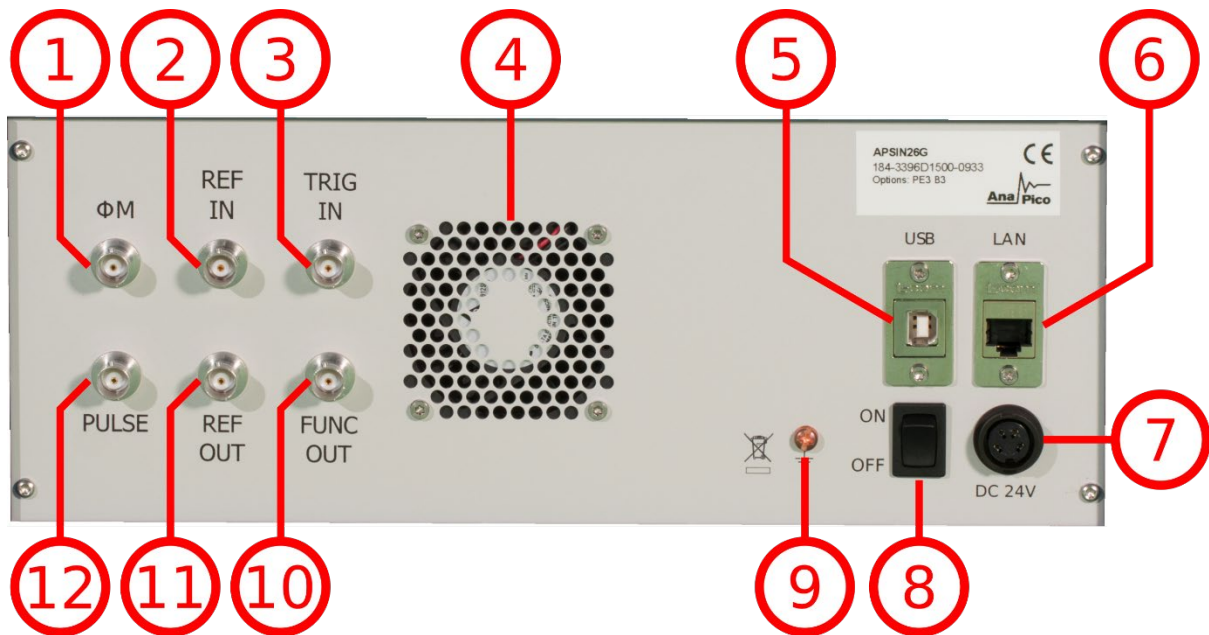


Figure 15: Desktop Rear Panel View (Model APSIN26G)

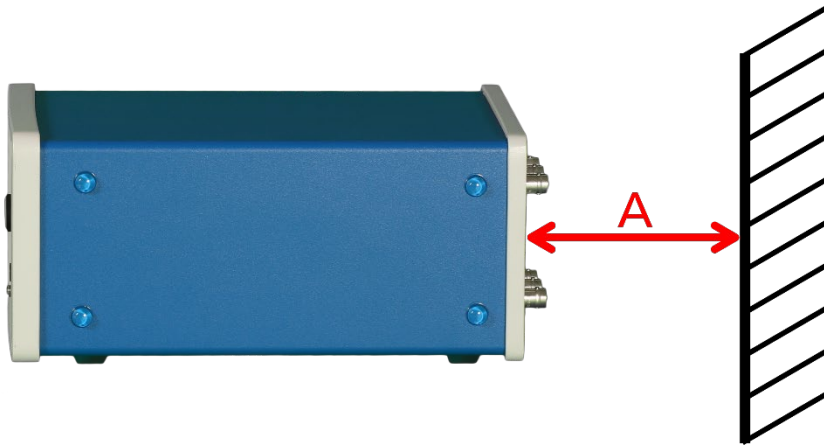
1. **ΦM** This BNC female Connector is the input for FM and PM.
2. **REF IN** This BNC female Connector is the input for the reference signal.
3. **TRIG IN** This BNC female Connector is the trigger input.
4. **Fan Holes** The holes by which the air is extruded.
5. **USB B** The USB B connector is used to connect the device to a computer.
6. **LAN** The LAN connector is used to connect the device to a network.
7. **Power Supply** apply the AnaPico power adaptor to this connector to supply the device with energy.
8. **ON/OFF Switch** Turns the device on or off.
9. **Ground Screw**
10. **FUNC OUT** This BNC female Connector is the output for the function signal.
11. **REF OUT** This BNC female Connector is the output for the reference signal.
12. **PULSE** This BNC female Connector is the input for the AM and the PULSE Modulation signal.

Minimum Distances

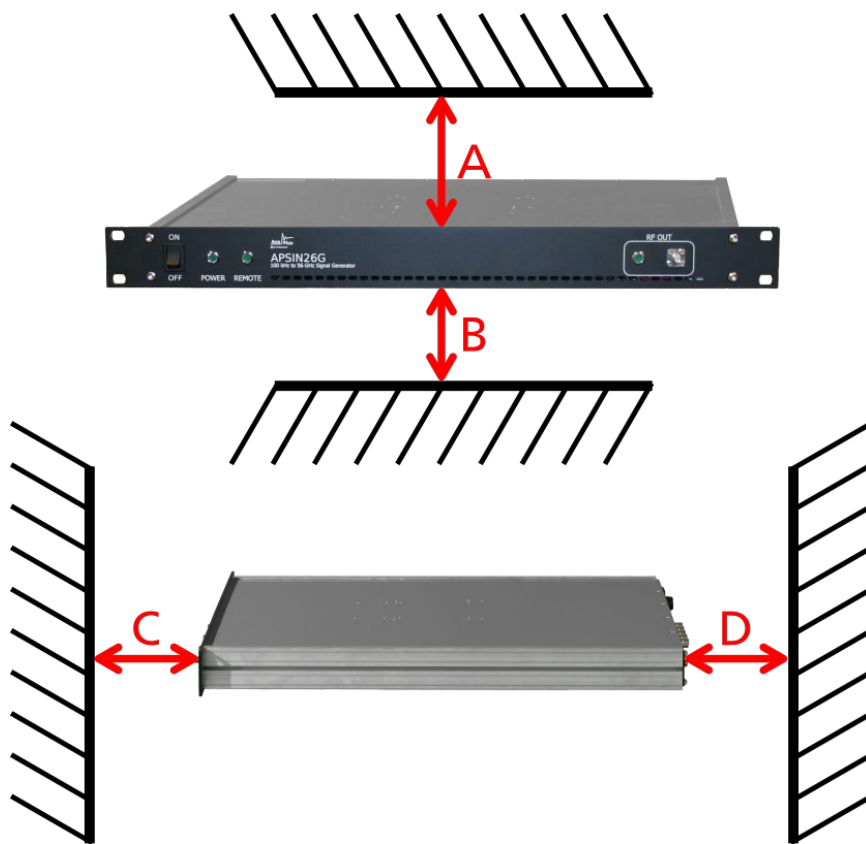


For an adequate cooling, the minimum distances between the device and another object, such as walls, rack cabinet walls or other equipment must be respected.

The minimum distances are:



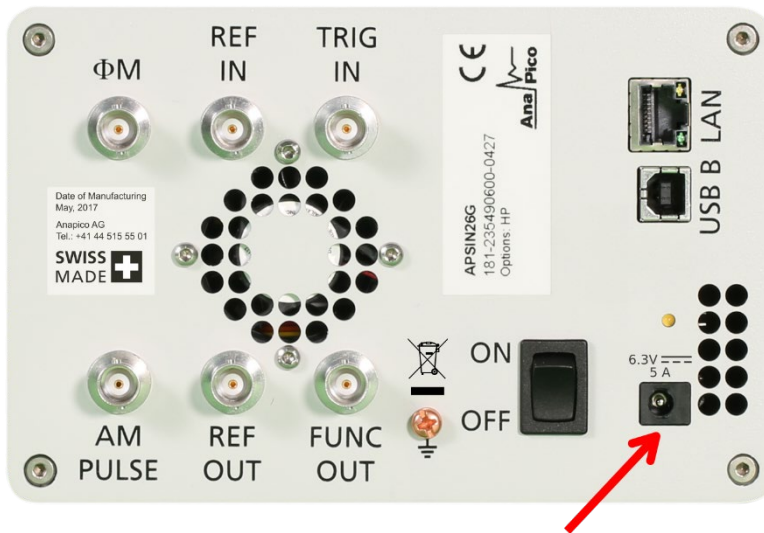
Minimum distances for the CPC:
A: 150 mm



Minimum distances for the 1URM:
A: 1mm
B: 1mm
C: 50 mm
D: 50 mm

Energizing and de- Energizing

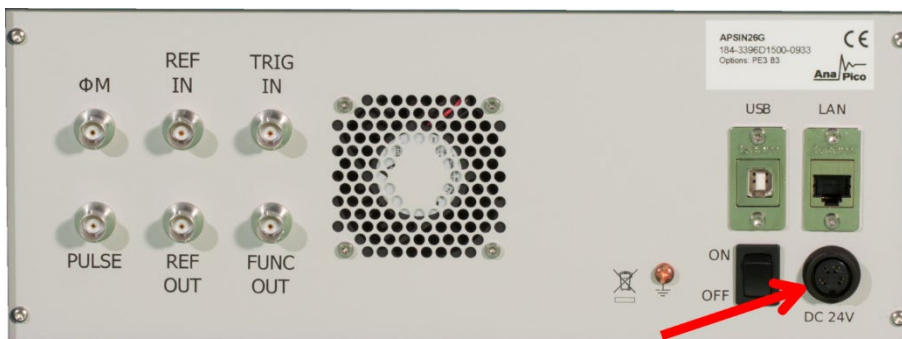
To energize the device, apply the following voltage to the following connector.



Position of the power connector on the left.
Voltage:
6.3V DC
Max. current:
5A



Position of the power connector on the left.
Voltage:
100V – 240V AC
Frequency:
50 Hz – 60 Hz
Max. current:
3A



Position of the power connector on the left.
Voltage:
24V DC
Max. current:
5A

The 1URM case has a fuse, accessible from the outside. To change the fuse, pull out the mains plug, push the fuse holder into the back panel and turn it around 45°, then take the holder out. Replace the old fuse with a new one. It is forbidden to repair defect fuses or to bridge them by any means. Use only a fuse with the following specifications.

Type of fuse:

- Size: 5 x 20 mm
- Voltage: 250V ~
- Current rating: 3.15A
- Characteristic: Time-Lag T
- Breaking capacity: 35A – 200A



Use the supplied power adapter from AnaPico to supply the CPC. Apply only a voltage with the values specified below.

The used power adaptor the CPC has the following specifications:

Input: 100-240V~, 50-60Hz, 1.5A

Output: 6.3V DC, 5.71A, 36W

Efficiency Level: VI

To De-energize the device, pull out the power cable.



If the back side of the 1URM case is not accessible during operation, make sure the rack has a power switch.

Proper operation conditions

The devices are designed for use in dry and clean environments. The CPC can also be used in field as long as the operating conditions are met. Operation in an environment with high dust content, high humidity, danger of explosion or chemical vapors is prohibited.

Operating temperature range: 0°C to +45°C.

Storage and transportation temperature range: -40°C to +70°C.

Operating and storage altitude: 4600m

In case of condensation 2 hours are to be allowed for drying prior operation. Operation is only allowed from a 3-terminal mains connector with a safety ground connection and a mains plug used in your specific country. For sufficient ventilation, ensure open ventilation holes.

Environmental Information

1. Waste electrical and electronic equipment must not be disposed of with unsorted municipal waste, but must be collected separately. Contact the Anapico customer service center for environmentally responsible disposal of the product.
2. Specially marked equipment has a battery or accumulator that must not be disposed of with unsorted municipal waste, but must be collected separately. It may only be disposed of at a suitable collection point or via Anapico service center.

Introduction

This instruction manual is valid for AnaPico model series APSIN, APULN, APMS and APSYN. Chapter **Error! Reference source not found.** gives guidance for a quick and easy setup of your new instrument. Chapter **Error! Reference source not found.** describes the remote operation via AnaPico graphical user interface (GUI). Chapter **Error! Reference source not found.** describes control via front panel and applies only to APSIN models.

Included Material

Your signal generator kit contains the following items:

- Signal Generator
- Universal power adaptor (AC 100 – 240V) with corresponding country specific plugs
- Ethernet Cable
- Manuals & software CD

General Features and Functions (Model overview)

AnaPico RF & Microwave Signal Generator model overview

Models	Range	Power range	Options	Display
APSINX010	9 kHz – 2,4,6 GHz	-30 - +15 dBm	B3, PE3, GPIB, RM, 1URM, REAR, AVIO	Y
APSINXXG	100 kHz – 12, 20, 26 GHz	-20 - +15 dBm	9K, B3, PE3, GPIB, RM, 1URM, FS, HP, TP, LH, REAR, NM	Y
APULNXX	100 kHz – 6,12.75, 20, 26, 40 GHz	-20 - +25 dBm	PE3, PE4, GPIB, RM, LH, 1URM, FS, LN, MOD, EB, REAR	Y
APMSXXG	300 kHz – 6,12, 20, 26, 33, 40 GHz	-20 - +25 dBm	FS, GPIB, LN, MOD, PE4, PHS, VREF	N
APSYN420	0.01 GHz – 20.0 GHz	+23 dBm	FS, LN	N
APSYN140	0.01 GHz – 40.0 GHz	-10 - +25 dBm	FS, LN, VREF	N
APSYN140-X	0.01 GHz – 40.0 GHz	-10 - +25 dBm	FS, LN, VREF	N

General features include

- Extendable power range (option PE3, PE4)
- Modulation capabilities for FM, PM, AM and PULM modulation (model dependant)
- Fast frequency, power and list sweeps

- Light weight, optional internal rechargeable batteries (options B3, EBAT)
- 3- inch status LCD (APSIN models only)
- Long-term support: Software upgrades (firmware, API, GUI) are available to download from www.anapico.com. You can also call our technical specialists for support. You can continue to use both of these services free of charge for the lifetime of the product.
- Universal LAN VXI-11 and USB 2.0 device and host interface
- 18-24 months calibration cycle

Options

B3: internal rechargeable battery

FS: fast switching

LN: enhanced close in phase noise

MOD: analogue modulation

PE3: mechanical step attenuator for extended power range

APSINX010	90 dB
------------------	--------------

APSINXXG	75 dB
-----------------	--------------

PE4: electrical step attenuator for extended power range

APULN, APMSXXG	80 dB
-----------------------	--------------

GPIB: GPIB interface added

AVIO: specific avionics modulation capabilities added (APSIN6010)

1URM: 19" 1HE enclosure. No display, remote control only

RM: 19" 3HU rack-mount kit

REAR: Move output to the rear

9K: Frequency range extension to 9 kHz

HP: High output power

TP: Color touch-screen front panel

LH: Desktop housing with color touch-screen front panel

NM: Remove modulation function

EB: External power bank

PHS: Phase coherent switching

VREF: Variable external reference

Getting Started

System Requirements

The AnaPico graphical user interface requires at least the minimum system requirements to run one of the supported operating systems.

Operating system Windows™ 2000 SP4, XP SP2, Vista, 7, 8, 10

Remote 10/100/1000M Ethernet or USB 2.0 Port

Unpacking the Instrument

Remove the instrument materials from the shipping containers. Save the containers for future use.

For a list of material included in the standard package, please refer to chapter 0.

Initial Inspection

Inspect the shipping container for damage. If container is damaged, retain it until contents of the shipment have been verified against the packing list and instruments have been inspected for mechanical and electrical operation.

Starting the Instrument

This section describes installation instructions and verification tests.

Applying Power

Place the instrument on the intended workbench and connect the appropriate DC power supply to the receptacle on the rear of the unit. Make sure you use the included DC power supply.



Using other supplies may lead to malfunction and damage of the Instrument.

Press the line on/off switch on the rear panel. If available, the front panel display will illuminate. The instrument will initialize and momentarily display the model number, firmware revision and product serial number. The display will then switch to the factory default display setting, showing preset frequency (100 MHz) and power (0.0 dBm), phase lock status (of internal reference) and instrument connectivity status (Ethernet IP or USB identifier).

Note, the instrument booting process may take up to 60 seconds (depending on configuration) to complete.

Connecting to LAN

Connect the instrument to your local area network (LAN) using the Ethernet cable. By default, the instrument is configured to accept its dynamic IP number from the DHCP server of your network. If it is configured properly, your network router will assign a dynamic IP number to the instrument which will be automatically displayed on the screen. Your instrument is now ready to receive remote commands.

Direct connectivity to host via Ethernet cable (no router)

You can connect to the instrument to your computer with the Ethernet cable without using a local area network with DHCP server. To work properly, the network controller (NIC) of your computer must be set to an IP address following the ZEROCONF standard, beginning with 169.254.xxx.xxx (excluding 169.254.1.0 and 169.254.254.255) and network mask 255.255.0.0 to match the ZEROCONF IP that the signal generator will assign itself after DHCP timeout. Any fixed address in the abovementioned range is admissible as well. The generators ZEROCONF address cannot be predicted as it is assigned dynamically, however the ZEROCONF address assignment process ensures it will not conflict with any other address used in the network.

Connection from a NIC that is configured to use DHCP is also possible. After a pre-set timeout, the NIC will assume that no DHCP is available and self-assign a fallback IP that will fall into the range 169.254.xxx.xxx.

Alternatively, you may assign the instrument a fixed IP. Please refer to a later section of this manual to learn how to do this.

Connecting through USB

Connect the (powered on) instrument to the computer using a quality USB type-A to type-B cable. If properly connected, the computer host should automatically recognize your instrument as a USBTMC device.

Note if you want to work with the AnaPico GUI, it must be installed with USB support selected. Then the GUI will detect all attached devices automatically. Open the GUI and follow the instructions given in Chapter **Error! Reference source not found.**

Alternatively, a VISA runtime environment (NI, Keysight or comparable) must be installed.

Use VISA Write to send the *IDN? Query and use VISA Read to get the response. The USBTMC protocol supports service request, triggers and other GPIB specific operations.

Connecting through GPIB

Connect the instrument to the GPIB controller using the rear panel GPIB connector (option GPIB is required). Once connected properly, use VISA Write to send the *IDN? query and use VISA Read to get the response. The protocol supports service request, triggers and other GPIB specific operations.

Installing the APSIN Remote Client

AnaPico's graphical user interface provides an intuitive control of the instruments. It runs under Windows™ operating system with minimum requirements. The DLL is embedded in the GUI application and requires the Microsoft® .NET™ framework to be installed. To install the GUI on the computer, insert the AnaPico Software and Manual CD into the CD/DVD drive. If the setup doesn't start automatically double click on the **setup.exe** to run the auto-installer.

The self-extracting setup provides easy installation and de-installation of the software. The setup program guides you in a few steps though the installation process. In case the NET framework is not installed on your current Windows™ operating system, the setup procedure will assist you automatically to install the required version. For this you will need an active internet connection.

Troubleshooting the LAN Interconnection

Software does not install properly

- Make sure your installation CD is not damaged.

- When Microsoft .NET Framework is not installed make sure that your computer is connected to the internet during installation of the AnaPico Software. If no internet connection is available, install the .NET™ Framework that is available on the installation CD.

Software cannot detect any instrument

- Make sure you have connected both computer and instrument to a common network.
- If a direct connection is used you may require to reset your computer Ethernet controller (depending on the configuration). Note that in that case detection of the instrument can take a considerable amount of time if your computer is configured to work with an external DHCP server. In some cases the detection may even fail completely. Configure your computer network controller to an appropriate fixed IP instead.
- Make sure that your software firewall enables the GUI to setup a TCP/IP connection via the LAN. Under Windows 7/10 you can do that like this:
Open *Control Panel* under *Settings* in your *Start* menu. Then go to *Windows Firewall*. Click on *Exceptions* and then *add Program*. If the GUI is in this list, choose it and click *OK* otherwise you have to browse for the path to GUI installation directory. Finally close all open dialogs with *OK*. Now your Windows™ Firewall will not block requests from the GUI.

Shutting Down the Signal Generator

Press the line on/off switch on the rear panel to off.

Using the Graphical User Interface (GUI)

AnaPico's graphical user interface provides an intuitive control of the signal generator. It runs under any Windows™ operating system. Make sure the software is installed correctly and the computer's firewall is configured properly. The GUI's dynamic link library (DLL) uses the Microsoft .NET framework.

Start the Signal Generator (SG) GUI

After successful installation of the software double-click the software shortcut that has been created on your desktop.

After start, the GUI will automatically detect existing AnaPico instruments that are connected to the computer (network) via local area network, USB, or GPIB. In the **CONTROL** tab (see **Error! Reference source not found.**) the detected instruments are listed. Clicking on one of the devices will instantly establish connection. Clicking on an alternate device will disconnect the old device and reconnect to the new device. **Scan Instruments button** will enable automated scanning for new instruments. **Disconnect/Connect button** will establish and terminate connection.

General Look

1. The CONTROL tab (**Error! Reference source not found.**) completes the following function
 - Scan and establish connection to instrument
 - Configure remote interface (LAN, USB, GPIB)
 - Save, load and manage instrument memory states
2. CW tab
3. SWEEP tab
4. MODULATION Tab
5. REFERENCE Tab
6. TRIGGER Tab
7. LF OUT Tab

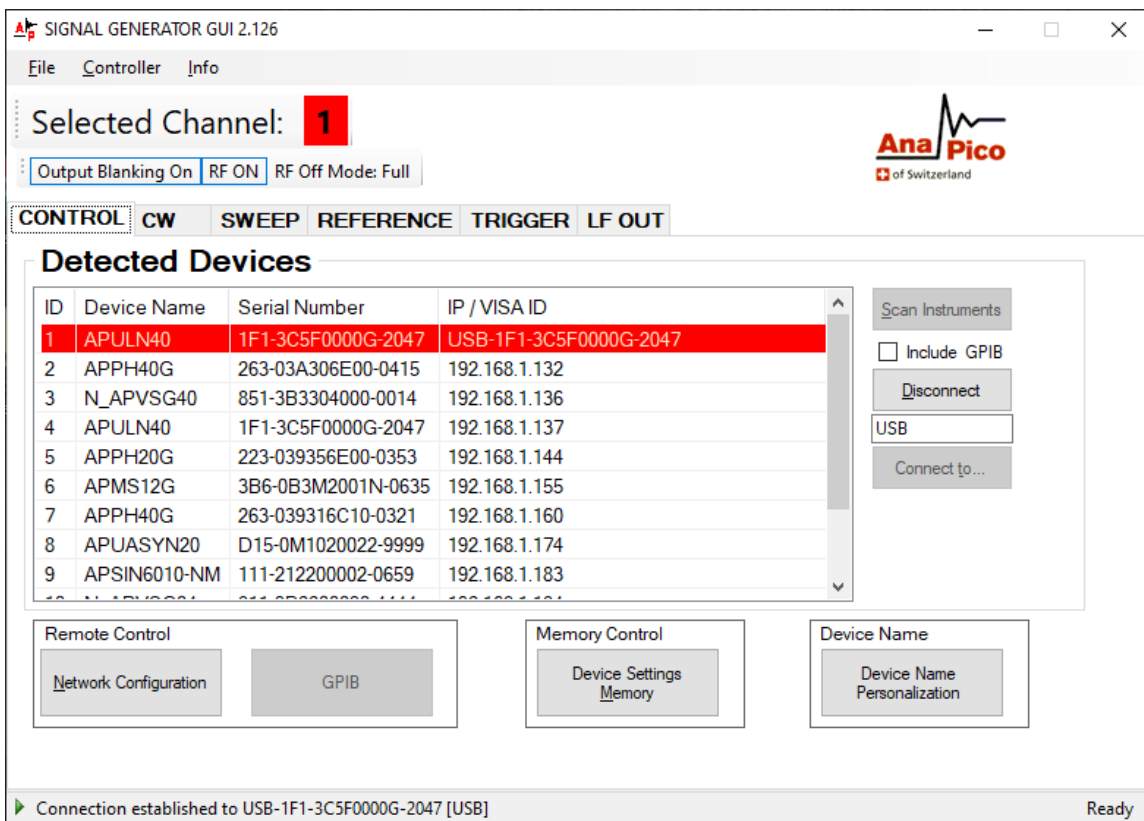


Figure 6-a Control Tab

Simultaneously controlling Multiple Signal Generators from one PC

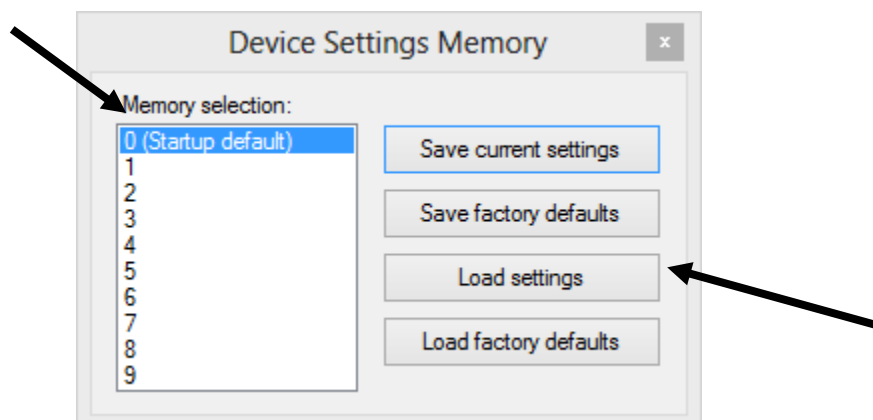
You can easily control multiple AnaPico instruments from a single computer but you need to start a separate GUI for every instrument as only one instrument is controlled by the GUI at once.

Store and Load Instrument States

Multiple memory states are available to store instant instrument settings. By clicking on the **Device Settings Memory** button the currently saved memory settings are displayed and can be loaded or overwritten as shown in **Error! Reference source not found.** To modify or enter a state, click on the appropriate line and select if the current instrument settings shall be stored in or loaded from the selected memory state.

NOTE: Memory 0 is used as default state when the instrument is powered up.

The memory states can also be accessed via the front panel menu.



Setting Network Configuration

The **Network Configuration** button allows configuring the LAN settings as shown in Figure Error! No text of specified style in document.-o. You may choose from three distinct network addressing modes: setting to Auto will check for a DHCP server on the network but if this fails, will fall back to assigning an address automatically using zeroconf. Setting to DHCP will check for a DHCP server on the network with no fallback option if one doesn't exist. Setting to manual will require the user to supply all network settings for the device manually below. Additionally, the device name can be modified as desired. The unit serial number and firmware revision are displayed at the bottom of the dialog box.

Figure Fehler! Kein Text mit angegebener Formatvorlage im Dokument.-p Network Configuration Submenu

Multi-Session Option

The 'Multi-Session' checkbox can be selected to enable the device to be accessed from more than one instance of the UI. This enables users on multiple computers on the network to connect to and configure the device simultaneously. It is the user's responsibility to manage access conflicts whilst this mode is enabled (i.e. 2 users changing the same option from different PCs).

Device Port Setting

The 'Port' option allows the listening TCP port to be customized for the device. The default setting for all devices is port 18. If changed, the device will no longer be accessible using this port number. Any instances of the UI (or other VISA applications connecting to the device over a network) will need to modify their destination port number to match the device to connect to.

Connecting to devices using a non-default port

There are 2 options for connecting to a device when its default listening port has been changed.

1. Specify a temporary connection port

Click the menu 'Info' -> 'Connection Settings' -> 'Specify Connection Port'. This will cause a new setting 'Custom Port' to be displayed on the 'Control' tab of the UI (see figures 6-d and 6-e). The connection port to use can then be entered (within the range of permissible TCP port numbers). Beware that this setting will overwrite the default port until it is removed. To remove, select 'Specify Connection Port' again – this will remove the 'Custom Port' setting from the UI and revert to using the current default port. Deleting the port number from the 'Custom Port' text box will also cause the UI to revert to using the default port.

2. Change the application's default port setting

The global default port to use for connections can be changed by selecting menu 'Info' -> 'Connection Settings' -> 'Change Default Port' (see figure 6-d). A default port can be entered into the dialog box which appears and set by clicking button 'Set Default' – only permissible TCP ports can be entered here. If the new default port is accepted, the '[Default=]' text above will display the new setting. Beware that the new default setting will now persist until changed again – including after restarting the UI or rebooting your system.

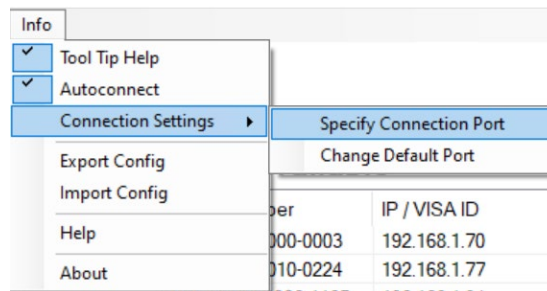


Figure 6-d – UI Connection Settings

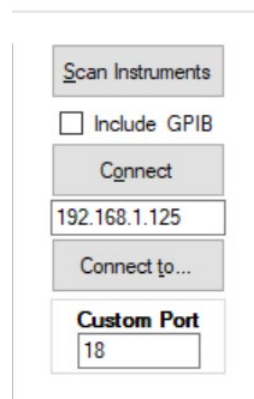


Figure 6-e – Specify connection port to overwrite the default port

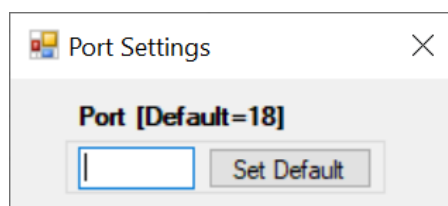


Figure 6-f – Set default port for connections

Setting the GPIB Address

If the instrument has the GPIB option installed, the GPIB address can be changed in the GPIB submenu in the control tab. Valid GPIB addresses range from 1 to 30.

To verify GPIB functionality, use the VISA Assistant available with the Agilent IO Library or the Getting Started Wizard available with the National Instrument IO Library. These utility programs enable you to communicate with the signal generator and verify its operation over GPIB. For information and instructions on running these programs refer to the Help menu available in each utility.

Perform Firmware Upgrade

A firmware upgrade of the instrument can be done directly via the GUI. First make sure you are connected to the right instrument and have the correct firmware binary file (.tar) ready. Then apply **Controller → Update Firmware** and select the appropriate binary file that you have received from AnaPico or downloaded from the AnaPico website. The update will take a few seconds and after completion your instrument will reboot. Reconnect to the instruments after booting is completed and continue with the updated firmware.



Do not disconnect and power off device during firmware update.

Multi-Output GUI Control

Individual outputs of the AnaPico multi-channel signal sources (such as APMSXXG-X or APSYN140-X) can be controlled by the GUI by selecting the corresponding channel above the control tab menu. Each channel can be configured fully independently as if they were individual signal generators. Note that the "Select Channel" appears only when connected to a multi-channel device.

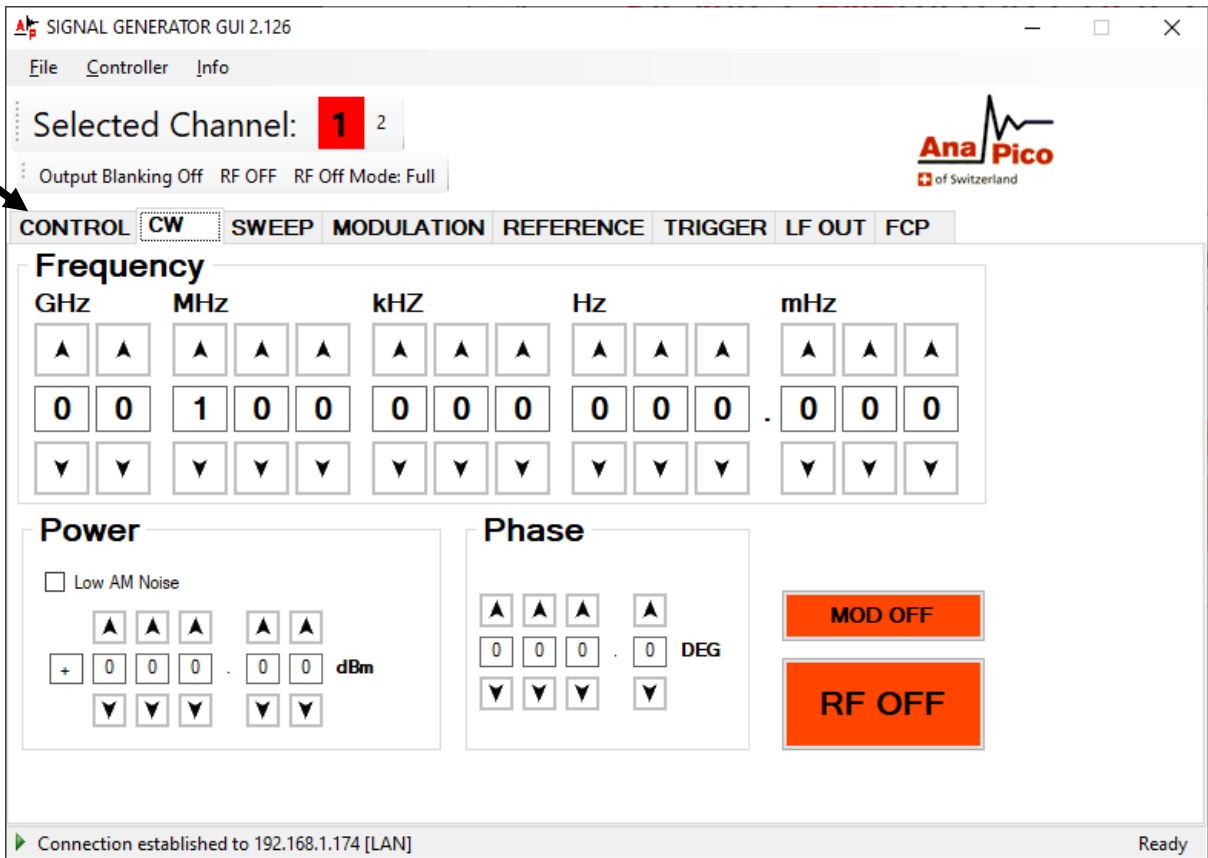


Figure Error! No text of specified style in document.-g CW Tab with channel selection

Combined Modulation

The tables below show what modulation types and sweeps can be active simultaneously.

Some modulations can be combined with frequency and power sweeps. For those combinations, some timing restrictions apply. Check programmer's manual for further details.

Some combinations may be available only using the GUI or custom remote programming sequences, but not on the front panel.

	FM/PM INT / EXT	AM INT / EXT	PULSE INT / EXT	LF Generator
FM/PM				
INTERNAL		LIMITED [1]	YES / YES	YES
EXTERNAL		LIMITED [1]	YES / YES	YES
AM				
INTERNAL			NO/ NO	NO
EXTERNAL			NO/ NO	YES
PULSE				
INTERNAL				YES
EXTERNAL				YES
LF Generator				
CHIRP	NO/NO	LIMITED [2]	LIMITED [3]	YES

Table Error! No text of specified style in document.-e – Possible combinations of internal and external modulation and the internal LF generator output.

Remarks

- [1] Combining AM and FM/PM is available to APSINx010 and APSINxxG only.
- [2] Enable AM first since active chirp disables live update of other settings.
- [3] In ALC on mode.

	FM/PM INT / EXT	AM INT / EXT	PULSE INT / EXT
Frequency sweep			
Power sweep	LIMITED [1,2]	LIMITED [1,2]	LIMITED [2,3]
List sweep			

Table Error! No text of specified style in document.-f – **Possible combinations of internal and external modulation and sweeps**

Remarks

- [1] AM, FM, PM modulated carrier sweep is available to APSINx010 and APSINxxG only.
- [2] Enable modulation first since active sweep disables live update of other settings.
- [3] In ALC on mode.

Local Operation via Front Panel

Most of the signal generator models offer direct front panel control.

A rotary knob and five keys (MENU, and four arrow keys) allow full control over the instrument. Figure Error! No text of specified style in document.-p shows the front panel of the APSIN, Figure 7-b shows the front panel of the APULN (resp. APSIN with option TP).



Figure Error! No text of specified style in document.-q APSIN Front Panel



Figure Error! No text of specified style in document.-r APULN / APSIN-TP Front Panel

For both Front panels:

RF 50Ω connector This female N-type connector provides the output for RF signals. The impedance is 50 ohm. The damage level is +30 dBm maximum. The maximum allowed DC level is +/- 10 V.

Rotary knob is used to switch between menus and to continuously change values at cursor position.

Only for APSIN front panels:

RF On/Off button The **ON/OFF** key toggles between RF output on and RF output off. The green light is indicating whether the RF output is enabled (light on) or not.

Menu Key This is a multifunction key. The key is used to enter and exit menus. Press once to return to CW menu, press multiple times to toggle between the currently selected submenu and the CW menu.

The submenus can always be exit by pressing the menu key.

↓↑→← **Keys** These keys are used to move cursor within the screen menus. Within menus, the →← keys are also used to enter (→) and exit (←) in next menu hierarchy; the ↓↑ arrows are used to navigate between menu pages when several are available.

LAN LED illuminates as soon a remote connection is active.

Power LED illuminates when system is powered up.

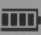
The currently active display position is shown by the cursor (underline symbol, or different background colour). The cursor does not move beyond the field of the currently selected parameter. Rotate the front panel knob to modify the value. Clockwise rotation increases the parameter and counter-clockwise rotation decreases the parameter. The parameter value will continue to increase or decrease by the amount of the selected resolution until it reaches the maximum or minimum limit of the parameter.

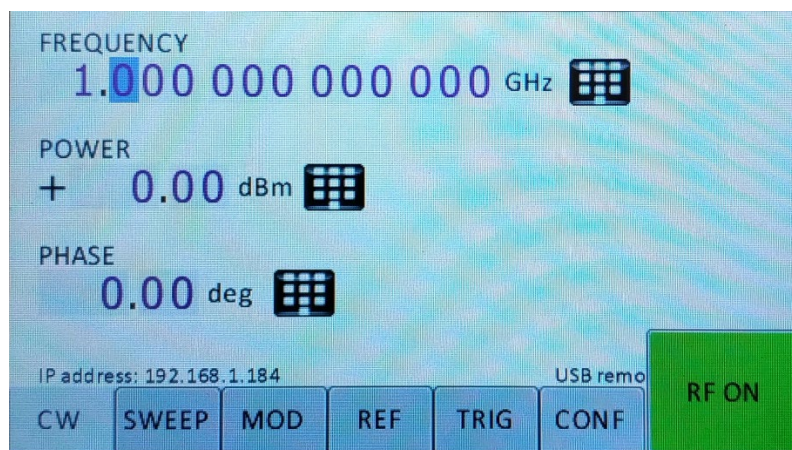
Displayed Parameter Formats

The following sections describe how to control the instrument via the front panel control by invoking various menu functions.

CW Display

The Main or CW Display is shown after the instrument has successfully booted and is ready. The four line display has the following format:

Output Frequency	10.100'000'000'0 GHz 
Output Power	+ 10.00 dBm
Ref. Frequency	INT REF FREE-RUN
Remote Control	LAN: 192.168.1.92



Main Menu Display

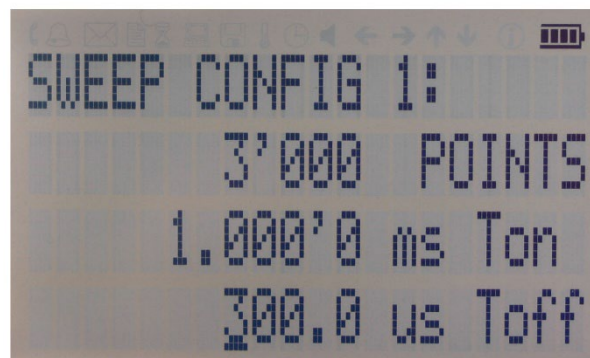
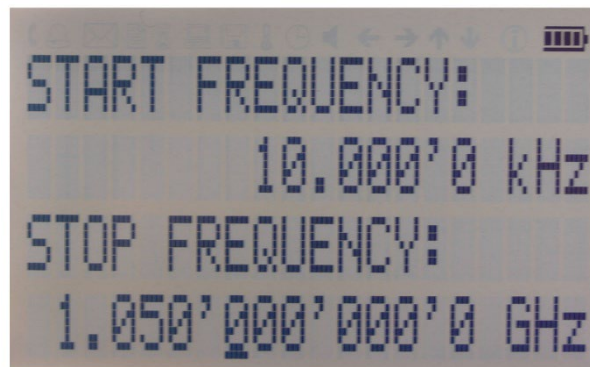
The Main Menu Display is invoked by pressing the **menu key**. The main menu contains nine submenus as shown below:

1. Sweep
2. Modulation
3. Reference
4. Trigger
5. LF Output
6. LAN Config
7. Display Settings
8. Device Settings
9. Help

Frequency Sweep Submenu

After accessing the Frequency Sweep menu, first of three displays allows to enter the start and stop frequency. On the second display the number of points and the on and off time can be entered. On the third screen select the sweep mode between LINear, LOGarithmic and RANDom. Also select the repetition mode between INFinite and 1 (single repetition).

Start the sweep by pressing the **RF On/Off button**.

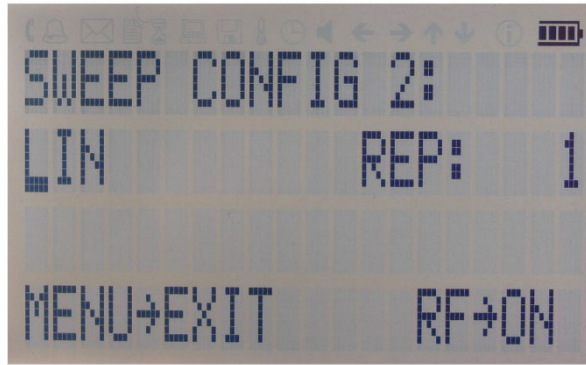


Number of Points per Sweep

On (dwell) time

Off time

Sweep Mode



Repetition

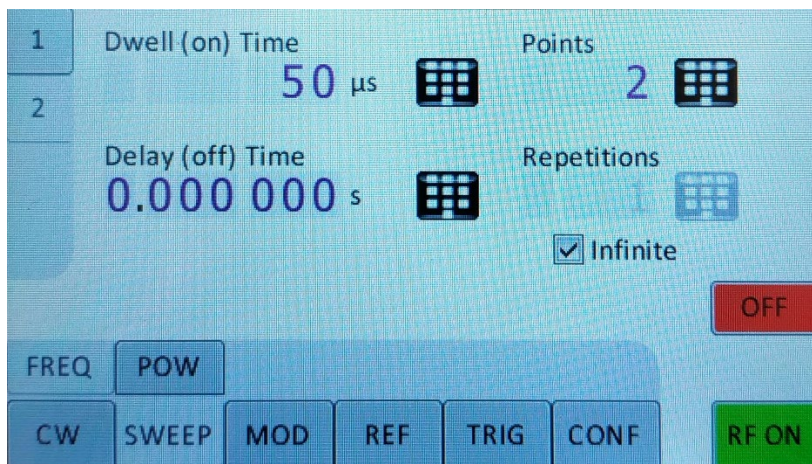
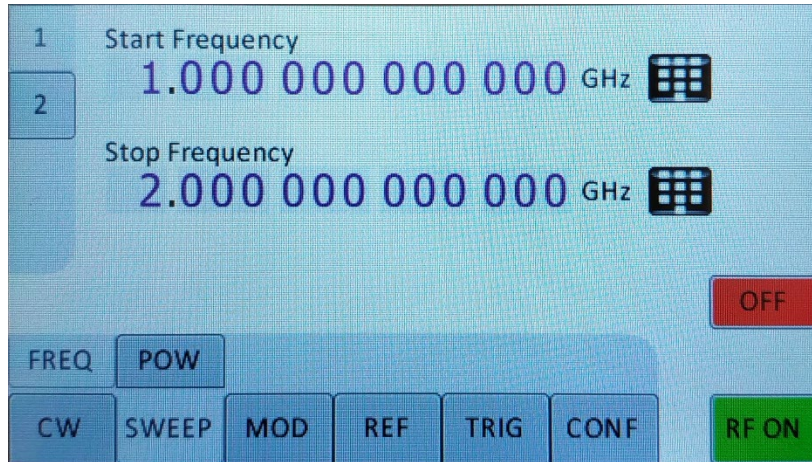


Figure Error! No text of specified style in document.-s Displays shown for the frequency sweep configuration

Power Sweep Submenu

After accessing the Power Sweep menu, the first display allows to enter start and stop power. On the second display, the number of points and the on and off time can be entered. On the third display, select the repetition mode between INFinite, and 1 (single repetition).

Start the sweep by pressing the **RF On/Off button**.

List Sweep Submenu

When entering the List Sweep submenu, a list of stored list sweeps is displayed.

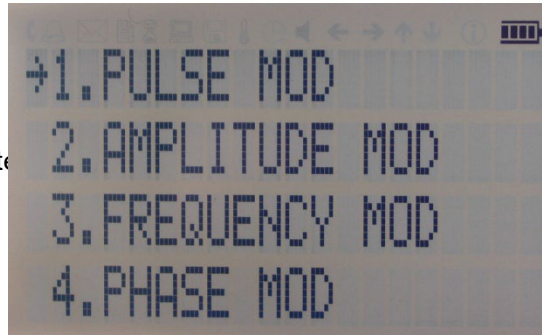
After accessing the List Sweep submenu, the first display allows to enter start and stop. Additionally, the number of repetitions of the list can be entered and the ALC can be set on or off.

On the second display a particular list can be selected from the flash memory of the device.

Important note: All sweeps must be started with the RF on/off button on (green light illuminated) otherwise no signal will be output during the sweep.

Modulation Submenu

- Pulse Modulation
- Amplitude Modulation
- Frequency Modulation
- Phase Modulation



Submenu

Figure Error! No text of specified style in document.-u Modulation Submenu

Pulse Modulation Submenu

On line 1 select between INT (internal pulse generator) and EXT (external input).

If internal modulation (INT) is selected, go to line 2 to change pulse width to desired value and go to line 3 to change pulse modulation frequency.

Amplitude Modulation Submenu

In the Amplitude Mod submenu the internal amplitude modulation can be accessed. The modulation rate can be set between 1 Hz and 10 kHz.

Frequency Modulation Submenu

In the frequency modulation submenu the internal and external frequency modulation can be accessed. It is possible to change between internal and external modulation source and to change modulation parameters such as modulation rate, depth or sensitivity.

Phase Modulation Submenu

In the phase modulation submenu the internal and external phase modulation can be accessed. It is possible to change between internal and external modulation source and change modulation parameters

Reference Submenu

After accessing the Reference menu, use the **rotary knob** to toggle between ON and OFF or to change reference frequency to the desired value, respectively.

Trigger Submenu

After accessing the Trigger menu, use the **rotary knob** to toggle the selected entry value or to change selected digit. The display shows up as following.



Figure Error! No text of specified style in document.-v Trigger Submenu

Select SOURCE: IMMEDIATE, EXTERNAL, BUS (SCPI command), KEY (RF on/off button)

Select SLOPE: POSITIVE, NEGATIVE

Select CONTINUOUS: ON, OFF (ON means that the trigger is re-armed after each trigger occurrence)

Select RETRIGGER: OFF, ON, IMMEDIATE (OFF means that any trigger event during execution of list is ignored)

Enter DELAY: trigger delay in microseconds.

Press the **RF On/Off button** to arm the trigger. Exit the menu by pressing the **menu key**.

LF OUTPUT Submenu

In the LF OUTPUT Submenu the FUNCT OUT output can be configured at the rear panel of the instrument.

On the first screen the source for the FUNCT OUT can be selected. Choose LFG for the low frequency generator, TRIG to enable the instrument trigger output and PULM to enable the pulse video output. If LFG is selected, select the waveform between sine, triangle, or square. Then enter the desired output frequency and voltage amplitude.

LAN Configuration Submenu

In the LAN Configuration menu, IP address, subnet mask and DHCP can be configured. Press the **RF key** to save the configuration (don't if you want to discard your changes).

Display Settings Submenu

After accessing the Display Configuration menu, use the **rotary knob** to change the display contrast as required. Press the **menu key** to save and exit the Display Settings submenu.

Save Settings Submenu

After accessing the Load Settings menu, use the rotary knob to get to the memory state you want to save. Press **RF ON/OFF key** to save your settings

Load Settings Submenu

After accessing the Load Settings menu, use the rotary knob to get to the memory state you want to load. Press **RF ON/OFF key** to load.

Load Defaults Submenu

Press **RF ON/OFF key** button to load.

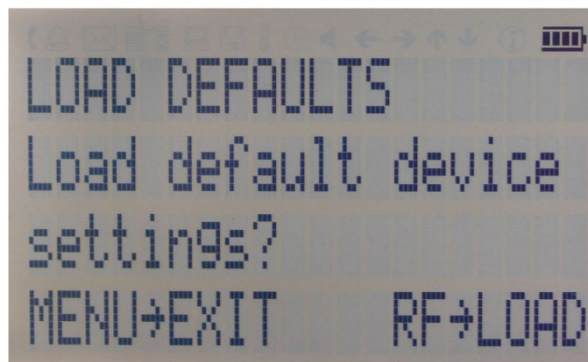


Figure Error! No text of specified style in document.-s Restore Startup Settings

Help Submenu

This submenu provides basic information about the front panel menu control.

Remote Programming the Signal Generator

The signal generator can be remotely programmed. Please refer to the Programmer's Manual for details.

Battery Operation (B3 Option)

If your instrument is equipped with an internal rechargeable battery (B3 option) it can be operated without the external power supply. Fully charged battery is good for up to three hours of operation at full RF output power. The same external power adaptor (6 V @ 3 A) is used for the battery version as for the standard model for both normal operation and charging of the battery.

There are four operating modes that are also summarized in Table 2 below:

normal operation – the external power supply is connected to the instrument and the device is turned ON (with the power switch on the rear panel turned ON). In this mode the instrument can be used as if no battery was present. The internal battery is not used and will NOT be charged.

charging – the external power supply is connected to the instrument and the device is turned OFF (with the power switch on the rear panel turned OFF). In this mode the instrument is charging the internal battery. Once the battery is fully charged, the instrument goes into standby mode. Time required to complete charging is approx. four hours.

standby – the internal battery is fully charged and the instrument is turned OFF.

battery operation – the external power supply is disconnected and the device is turned ON. The internal battery is supplying the power until it is exhausted.

Table 2: Operating modes of an instrument equipped with internal battery

Power Switch	External power adaptor	supplying power	disconnected
	ON	Normal operation (no charging)	Battery operation - until discharged (1)
OFF	Charging – when fully charged → standby (2)	Completely powered off	

Notes:

(1) The instrument will switch off automatically when the battery is discharged. It is recommended that the power switch is turned to the OFF position when the battery is fully discharged.

(2) Termination of charging is automatic. The unit will then enter standby mode. The power adaptor can be left connected for any length of time.

During operation the approximate remaining battery capacity is indicated by the battery symbol visible in the upper right corner of the display (see Figure Error! **No text of specified style in document.**-v)

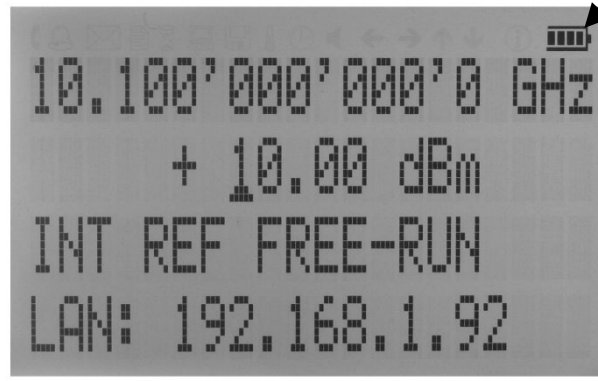


Figure Error! No text of specified style in document.-w CW Display with Battery Symbol

Hints for maximizing the battery running time:

1. Fully charge the unit before you use it. Toggle the power switch to ON and then OFF again while the instrument is powered by the external power adaptor. This will initiate a new charge cycle.
2. Charging time of a completely discharged battery can be up to 6 hours. **IMPORTANT: The battery will only be charged when the instrument power switch is in the OFF position.**
3. Batteries should always be charged at room temperature. Charging the instrument at very low or at elevated temperatures may result in early termination of the charging process for example the battery is not fully charged. For safety reasons the charging does not start when the internal temperature of the instrument is above 50 °C.
4. Check the battery indicator in the upper right corner of the display. It should indicate full charge when running on battery power after charging (4 segments).
5. Power consumption of the instrument is reduced when the RF power is switched off thereby increasing overall battery run time.
6. Battery run time is maximal for ambient temperature between 15 and 25 °C. Self-discharge of the battery is much faster at temperatures above 30 °C.
7. Avoid storing the instrument in very hot places such as behind the windshield of a car parked in the sun.

Hints for maximizing battery life expectancy:

1. The battery will reach its best performance after the first few charge-discharge cycles.
2. Always use the external power adaptor supplied with the instrument for normal operation and charging. This will make sure that the charging circuits work as specified.
3. Fully charge the instrument after running it from the battery for an extended period of time.
4. If an instrument with internal battery will be stored for a long period of time, fully charge it before storage, then remove the power adaptor and make sure that the power switch is in the OFF position. After storage, first charge the unit for 4-6 hours.

To replace the battery at the end of its lifetime, please contact AnaPico or one of its distributors.

NOTE:

- ◆ **Before using the instrument in battery mode for the first time, the battery must be fully charged.**
- ◆ **Batteries must be disposed of according to the local environmental regulations.**

Extended Power Range (PE3 Options)

Some instrument models are available with option PE3 that extends the power range towards lower power levels.

With these options PE3 installed, a mechanical step attenuator module is added. For the guaranteed minimum power level, please consult the respective datasheet.

In sweeps where the mechanical attenuator is switched, the minimum dwell time increases to 20 ms.

Maintenance and Warranty Information

Adjustments and Calibration

To maintain optimum measurement performance, the instrument should be calibrated every 24 months. It is recommended that the instruments be returned to AnaPico or to an authorized calibration facility. For more information please contact our Customer Service Department as indicated on www.anapico.com.

Repair

The signal generator contains no user-serviceable parts. Repair or calibration of the signal generator requires specialised test equipment and must be performed by AnaPico or its authorized repair specialists.

Warranty Information

All AnaPico instruments are warranted against defects in material and workmanship for a period of **two years** from the date of shipment. AnaPico will, at its option, repair or replace products that prove to be defective during the warranty period, provided they are returned to AnaPico and provided the preventative maintenance procedures are followed. Repairs necessitated by misuse of the product are not covered by this warranty. No other warranties are expressed or implied, including but not limited to implied warranties of merchantability and fitness for a particular purpose. AnaPico is not liable for consequential damages.

The warranty on the internal rechargeable batteries (option B3) is one year from the date of shipment. Battery replacement is available through AnaPico and its distributors.

Equipment Returns

For instruments requiring service, either in or out of warranty, contact your local distributor or AnaPico Customer Service Department at the address given below for pricing and instructions before returning your instrument.

When you call, be sure to have the following information available:

- Model number.
- Serial number.
- Full description of the failure condition.

Note: Model and serial number can be found on the rear of the instrument, next to the power plug.

You will get a Return Merchandise Authorization (RMA) number from AnaPico, please put it on the outside of the package.

Instruments that are eligible for in-warranty repair will be returned prepaid to the customer. For all other situations the customer is responsible for all shipping charges. An evaluation fee may be charged for processing units that are found to have no functional or performance defects.

For out of warranty instruments, AnaPico will provide an estimate for the cost of repair. Customer approval of the charges will be required before repairs can be made. For units deemed to be beyond repair, or in situations where the customer declines to authorize repair, an evaluation charge may be assessed by AnaPico.



CE Declaration of Conformity

We, **Anapico AG**
Europastr. 9
8152 Glattbrugg
Switzerland

declare under our sole responsibility that the products

Series APSIN2010, APSIN4010, APSIN6010
Series APSIN12G, APSIN20G, APSIN26G

with all options and accessories

to which this declaration relates are in conformity with the following directives, standards or other normative documents:

Electromagnetic Compatibility (EMC)
Directive 2014/30/EU
IEC EN61326-1, IEC EN61326-2-1

Low Voltage (LVD)
Directive 2014/35/EU
IEC EN61010-1

Restriction of the use of certain Hazardous Substances (RoHS2)
Directive 2011/65/EU

ANAPICO AG

March 1, 2017

Urs Lott, Director Production

